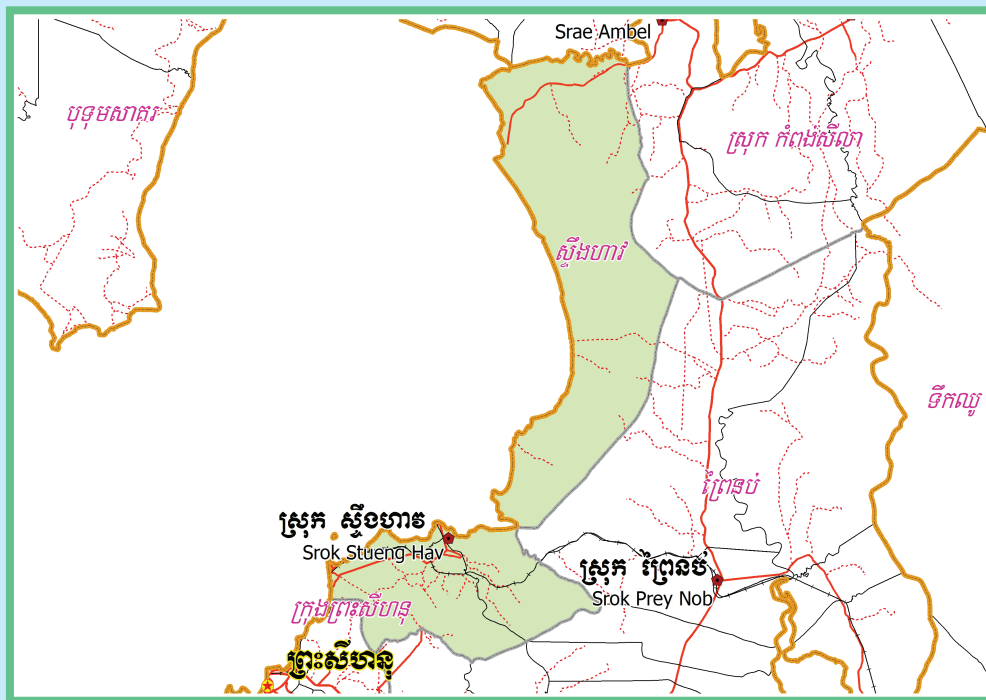


KINGDOM OF CAMBODIA
Nation Religion King



**National Committee for Sub-National
Democratic Development (NCDD)**



STUENG HAV DISTRICT DATA BOOK 2009

District Code Nr: 1803
Preah Sihanouk Province

October 2009

Stueng Hav District Data Book 2009

District Code Nr: 1803

Preah Sihanouk Province

Table of Contents

List of Abbreviations	i
Glossary.....	ii
Preface	vi
Introduction	vii
SECTION A: GEOGRAPHY	1
1 Administration and Infrastructure.....	3
2 Land Use and Natural Resources.....	5
3 Geography	7
3.1 Land Area	7
3.2 Distances between Offices	7
SECTION B: DISTRICT PROFILE	9
1 General Information	11
1.1 Population of the District.....	11
1.2 Occupations	12
1.3 Property	14
2 Infrastructure and Economy.....	16
2.1 Roads in meters over 3 years.....	16
2.2 Sewerage Pipes in meters over 3 years.....	16
2.3 Drainage and Bridges	16
2.4 Services in the District	16
2.5 Agriculture.....	17
3 Social Aspects	26
3.1 Education	26
3.2 Health.....	32
3.3 Water and Sanitation	34
3.4 Vulnerable groups.....	38
3.5 Migration	40
4 Natural Resources and Environment (NRE).....	42
4.1 Families involved with NRE issues over 3 years	42
4.2 Percentage of Families involved with Natural Resource issues, by Commune, for 2008	42
4.3 Percentage Houses with access to Garbage collection and Families affected by environmental Pollution, by Commune, for 2008	42
4.4 Percentage Families using chemical Fertilizer and chemical Pesticides, by Commune, for 2008 ..	42
5 Administration and Security	43

5.1	Birth Registration across 3 years.....	43
5.2	Number of unregistered Infants born in 2008, by Commune	43
5.3	Registered criminal Cases over 3 years	43
5.4	Registered criminal Cases per 10,000 people, by Commune, for 2008.....	43
5.5	Number of registered Land Disputes, by Commune, in 2008	43
6	Gender	44
6.1	Registered Domestic Violence over 3 years.....	44
6.2	Percentage of registered cases of Families experiencing domestic Violence, by Commune, in 2008	44
6.3	Women's involvement over 3 years.....	44
6.4	Percentage of Female Participants in Civil Society and of 18-60 year women with uncertain Jobs, by Commune, in 2008	45
6.5	Female-headed Households over 3 years.....	45
6.6	Percentage female-headed Households and with Children of less than 5 years old, by Commune, in 2008	45
7	Indigenous People in the District	46
7.1	Ethnic Minorities in the District over 3 years.....	46
7.2	Other Minorities in the District over 3 years.....	46
	SECTION C: PLANS AND PROJECTS	47
8	Priorities and Plans	49
8.1	Priorities of Commune Councils for 2009 in the District by Sector	49
8.2	Temporary Agreements by Commune, for 2009	53
8.3	Outputs, estimated and actual costs of C/S Fund Projects between 2005 and 2008, by Commune	65
8.4	Total Expenditure on C/S Fund Projects by sector and commune between 2005 and 2008.....	66
8.5	Actual 2009 C/S Fund projects by Commune	66
9	District level Projects from 2006 to 2009	67
9.1	District Initiative Infrastructure Projects from 2006 to 2009	67
9.2	District Initiative Service Projects from 2006 to 2009	68
9.3	Inter Commune Council Projects in 2008 and 2009	68
9.4	Other Projects in 2008 and 2009	70
	SECTION D: SERVICES AND ORGANIZATIONS	71
10	Infrastructure.....	73
10.1	Length of and Expenditure on Roads in 2008, by District	73
10.2	Scale of and Expenditure on Irrigation in 2008, by District.....	73
10.3	Power Supply in 2008, by District	74
11	Health Facilities.....	75

11.1 Health Facilities in the Province, by Operational District.....	75
11.2 Health Facilities and Staff in the province, by Operational District.....	76
11.3 Deliveries in 2007 in the Province, by Operational District.....	76
12 Education	77
12.1 Schools, Classes, Students, Staff, for for all levels, for 2007/2008 by District.....	77
12.2 Characteristics of Schools and School Principals for 2007/2008 by Commune	77
12.3 Enrolment by Level of Education, 2006/2007 by Commune	77
12.4 Enrolment by Level of Education, 2007/2008 by Commune	78
12.5 Aspects of Enrolment for 2007/2008 by Commune.....	78
12.6 School Buildings for all schools in the District for 2007/2008, by Commune	78
12.7 Conditions of Classrooms and Existence of Separate School Office and Library, by Commune	78
12.8 Community Participation and Financing across all schools in the District for 2007/2008 by Commune	79
12.9 Percentage Student Flow Rates and Graduation by level 2006/2007, by Commune	79
13 Staff and Resources at the District	80
13.1 District Councilors elected in 2009	80
13.2 Committees of the Council.....	80
13.3 Board of Governors.....	80
13.4 Offices under Sala Krong, Sala Srok and Sala Khan	80
13.5 Municipality/District/Khan line offices.....	81
13.6 Properties and Equipment of District Administration	81
13.7 Registered Revenue of the District Administration in 2008	82
13.8 Services in the District	82
13.9 Civil Society Organizations active in the District.....	83
13.10 Private Sector Organizations.....	84
SECTION E: POVERTY DATA	85
14 Data on Poverty	87
14.1 Predicted Poverty Rates for 2009, by commune	87
14.2 Poverty data from survey.....	87

List of Abbreviations

#	Number
AGR	Agriculture
BR	Birth Registration
C. Pilot	Piloted Commune
C/S	Commune / Sangkat
CBO	Community-Based Organization
CDB	Commune Database
CDPD	Commune Development and Planning Database
CIP	Commune Investment plan
CLTS	Community Led-Total Sanitation
Comm.	Commune
Com Cov	Commune Covered
CPA	Complementary Package of Activities
CPS	Community Preschool
CCWC	Commune Committees for Women and Children
DANIDA	Danish International Development Agency
DDLG	Democratic Development and Local Governance Project (EC-UNDP)
DFID	Department For International Development (UK)
DIP	District Initiative Project
DIS	District Information System
District PDRD	District Office of Rural Development
District WP	District Work Plan
DIW	District Integration Workshop
DoLA	Department of Local Administration
Dr	Doctor
DWRM	District Office of Water Resource and Meterology
ECD	Early Childhood education (part of PE)
EMIS	Education Management Information System
Event IC	Celebration of International Days
FDH	Former District Hospital
GTZ	German Society for Technical Cooperation (Gesellschaft für Technische Zusammenarbeit GmbH)
Ha	Hectare
HC	Health Center
HC (NB)	Health Center (no building)
HH	Headed Household
HSI	Intervention for Health
HP	Health Post
HW	Hand Washing
ICC	Inter Commune Council
IFAD	International Fund for Agricultural Development
IND	Industry
Inter-commune	Inter-Commune Project Management Committee or Inter-commune project
IO	International Organization
LASED	Land Allocation for Socio-Economic Development
LGCR	Local Governance for Children's Rights
M&E	Monitoring and Evaluation
MA	Medical Assistant
MoEYS	Ministry of Education, Youth and Sports
MoH	Ministry of Health

MoP	Ministry of Planning
MPA	Minimum Package of Activities
MW1	Primary Midwives
MW2	Secondary Midwives
n/a	Not available
NCD	National Contracts Database
NCDD	National Committee for Sub-National Democratic Development
NGO	Non-Governmental Organization
NRML	Natural Resources Management and Livelihood
NU1	Primary Nurse
NU2	Secondary Nurse
OD	Operational District
ODF	Open Defecation Free
Ope. Costs	Operational Costs
Others	Other Staff
PBW	Public Works
PDoEYS	Provincial Department of Education, Youth and Sport
PDRD	Provincial Department of Rural Development
PDWRM	Provincial Department of Water Resource and Meteorology
PE	Parenting Education
PHAST	Participatory Hygiene and Sanitation Transformation
PHD	Provincial Health Department
PID	Project Information Database
PMC	Project Management Committee
Pop 04-05	Population Covered 2004 or 2005
PSDD	Project to Support Democratic Development through Decentralization and Deconcentration
RRD	Rural Road Development
RH	Referral Hospital
RILGP	Rural Investment and Local Governance Project
RPRP	Rural Poverty Reduction Program
RuLIP	Rural Livelihoods Improvement Program
SIDA	Swedish International Development Cooperation Agency
SPPA	Senior Provincial Program Advisor
TBA	Traditional Birth Attendant
UNDP	United Nations Development Project
UNICEF	United Nations Children's Fund
Vil	Village
Vil Cov	Village Covered
VIL-HC	Distance from Village to Health Center
WASH	Water, Sanitation and Hygiene
WRM	Water Resource and Meteorology

Glossary

C/S Fund: The Commune/Sangkat Fund is established and managed by the Government of Cambodia to provide financial support for development projects and administrative costs of Commune/Sangkat Councils. The amount is determined as a percentage of the National Budget (for 2009: 2.8% over the 2008 budget) and is expected to increase gradually over the years. The total 2009 budget under this fund is \$ 27,643,902 (of which \$ 19,272,170 is for Development Projects and \$ 8,371,731 for Administration). Under the Rural Investment and Local Governance Project the World Bank currently reimburses the costs of development projects if these meet the Bank's criteria.

CDB: the Commune Data Base is a national database, compiled by the Ministry of Planning, on the basis of detailed questionnaires, completed at village and commune level, which are then sent to the Departments of Planning for data entry. The most recent round of data collection took place at the end of 2008 (and is reflected in the District Data Books). Commune, District and Provincial Profiles can be generated from this database and should be available from provincial Departments of Planning.

CDPD: the Commune Development and Planning Database is a database maintained by Departments of Planning and Ministry of Planning, recording proposed activities as determined and prioritized by Commune and Sangkat Councils; the Temporary Agreements between these councils and supporting agencies, as decided at District Integration Workshops and details on projects that actually take place at commune, district and provincial levels.

CIP: The Commune Investment Plan is a rolling three-year plan, developed and decided by the Commune or Sangkat Council. It sets priorities and identifies the projects proposed for the years to come.

Commune and Sangkat (C/S): the Communes (in rural areas) and Sangkats (in urban areas) are the lowest and smallest units of local government. Councils are elected directly, once in five years, for the 1417 Communes and 204 Sangkats. In the C/S there are 14,119 villages, which have Village Chiefs, but don't constitute a formal level of local government.

DIP: the District Initiative Project is jointly supported by the MDLF (Multi-Donor Livelihood Facility (supporting the NRM&L Program)) and PSDD. In 2009 it covers 106 districts, 60% of the total in the country, with a budget of \$ 3.2 million. It is focused on capacity development in planning, democratic development, public competitive procurement, financial management and service delivery.

DIS: The District Information System is a national database maintained by NCDD, recording resources, staff, revenue, infrastructure and equipment available in the 193 Districts and Khans throughout the country. The last update took place in July 2009.

District, Municipality and Khan constitutes the third level of Government in Cambodia. There are 159 rural Districts, 26 Municipalities and 8 Khans of Phnom Penh Capital. They all have Councils which were, for the first time, elected in May 2009, by the Commune/Sangkat Councilors. These councils have a mandate for 5 years.

DIW: District Integration Workshops are held between July and October, to bring Commune/Sangkat Councils, looking for support for their projects, together with the governmental and non-governmental agencies that may provide support.

ICC: Inter Communes Council projects are executed in 10 provinces under the Democratic and Decentralized Local Governance Project (DDLG). This five year project (2006-2010) is executed by Ministry of Interior and funded by the European Commission and UNDP. The project focuses on improving dialogue partnership and accountability; create a network of Commune Councils at the provincial and national level and support and contribute to local area development for poverty reduction. The work under the ICC component supports investments and services formulated through inter-commune dialogue and planning.

MEDiCAM: A non-profit and non-partisan membership organization for NGOs active in Cambodia's health sector. It is the primary networking agency for health-related NGOs.

NCDD: the National Committee for sub-National Democratic Development is the inter-ministerial body charged with the implementation of the Organic Law (a key legislative document, adopted in 2008, outlining the envisaged decentralization). NCDD also channels substantial financial assistance by a number of Development Partners, to projects and programs at various levels. This amounted to over \$ 91 million in 2008. More information at: www.ncdd.gov.kh. This website also provides access to reports, manuals, legal documents, details on projects and more.

OD: the Operational Districts are the districts as defined and used by the Ministry of Health. These do not coincide with the 193 (Administrative) Districts and Khans, as used by all other RGC agencies. The Operational Districts are usually larger, and so there are 77 Operational Districts against 193 administrative Districts and Khans. However they do fit within the boundaries of administrative provinces.

PID: The Project Information Database is the database maintained by NCDD at national and sub national level, to follow all aspects of projects by Commune and Sangkat Councils, including the C/S Fund projects

Provincial Investment Fund (PIF)

The Provincial Investment Fund is allocated to all Provinces and Municipalities according to a population based formula. Part of the fund is earmarked for support to planning activities of the Provincial / Municipal Department of Planning; and to gender mainstreaming activities of the Provincial Department of Women's Affairs. The remaining "un-earmarked PIF" is allocated by PRDC to sectoral technical departments against established criteria and in response to proposals with prioritisation taking into account: priorities formulated by the CS Councils and aggregated by District into District Priority Activities Matrices (DPAM); alignment with national planning and poverty alleviation criteria, complementarity with other planned activities; and performance of the Department concerned in implementation of activities in previous years. With this provisional allocation, the Department then programs activities through the District Integration Process. Finally, the agreed activities, plus support costs amounting to no more than 25% of the total, are included in a sub-contract signed between PRDC and the Department, pursuant to the overall PSDD contract signed between NCDD and PRDC. Total budget has been around \$ 2 million per year.

Province: the 23 Provinces and Phnom Penh Capital City represent the 2nd layer of government. They vary in size, from very small, like Kep (approx. 36,000 people) and Pailin (approx. 70,000 people), or large but with small populations, like Mondulkiri (over 60,000 people), and Ratanakiri (over 153,000) to densely populated and large, like Kampong Cham (over 1.7 million people) and Kandal (approx. 1.4 Million people).

PSDD: the Project to Support Democratic Development through Decentralization and Deconcentration is funded by DFID (UK), SIDA (Sweden) and UNDP and runs from 2006 till the end of 2010 (including a one year extension). Annual budgets range from \$ 11 million to over \$ 18 million. The project provides core technical support to NCDD and to the provinces, financial support to the C/S Fund, District Initiative, Provincial Investment Fund and capacity building support through training, studies and advisory services.

RILGP: The Rural Investment and Local Governance Project is a World Bank funded project that provides substantial support to C/S Fund projects and to developing the required infrastructure, policies, systems and skills. It started in 2003 with a Loan for \$ 22 million for 2003-2007 and was then extended with a Grant of \$ 36 million for the period of 2007-2010. Discussions about a possible RILGP 2 are taking place between RGC and the World Bank.

RPRP: the Rural Poverty Reduction Project is a seven year project from 2004 till 2010, funded by IFAD and UNDP and implemented through the Ministry of Agriculture, Forestry and Fishery, supported by the Ministry of Interior and facilitated by NCDD. The project is active in the provinces Prey Veng and Svay Rieng and focuses on 120,600 households below poverty line. The objective is poverty reduction with the active participation of the poor through improved livelihoods, Strengthened capacity, Sustainable farming systems and natural resource management, new and/or rehabilitated infrastructure development, increase accessibly to technology, services and markets for their economic and social development.

RULIP: the Rural Livelihoods Improvement Project is implemented by the Ministry of Agriculture Forestry and Fisheries (MAFF)' Project Support Unit- PSU, with the NCDD playing the role of cooperating agency. Funded by IFAD and UNDP, the project will run till 2014. The target group consists of poor households who have little or even no land, few livestock or other assets and often many dependents. The main goal of the project is to directly or indirectly improve the livelihood systems, food security and incomes of a total of 33,900 rural poor, ethnic minority and female headed households in targeted village of Kratie, Preah Vihear and Ratanakiri provinces in a sustainable manner.

Seth Koma: The UNICEF funded Seth Koma program focuses on measurable action for children and women. During 2006 -2010 it is implemented in six provinces. Government and UNICEF pursue a set of inter-related goals, addressing critical stages of the life cycle of the child: a) Mothers have safe pregnancies and deliveries and healthy newborns; b) best possible start in life of infant; c) Children enter schools at the right age of six years; d) Children are protected from exploitation, abuse, violence, discrimination and other risks; and e) Youth and adolescents acquire life skills, express their views, participate in the decisions.

Preface

The Government of Cambodia attaches great importance to optimal use of scarce resources and to participatory planning and management at all levels. The Organic Law which was adopted in 2008 provides the legal context for further steps towards improving and decentralizing planning, management and monitoring, and towards greater accountability and transparency of institutions at sub-national levels.

The Government has established elected Councils at the sub-national levels, and we will progressively give them the responsibilities, together with the human and financial resources, to deliver a wide range of public services. They will be more democratic, more efficient, more transparent and accountable, better at addressing gender and other inequalities, and at fighting corruption. We recognize that development does not come from government alone; it needs the involvement of citizens, civil society and the private sector, and the new system will facilitate this.

A central element in this process is the availability of information on any aspect of development to all concerned parties. The newly elected Councillors at District and Khan level, line departments operating at these levels, but also NGOs, Development Partners, Commune Councillors and citizens throughout Cambodia need information on problems and requirements, resources and opportunities, services and agencies, plans and projects. They will need such information to better understand the present situation, set targets for the future, monitor progress, know what others are doing and to apply resources wisely and this is the reason the District Data books will be so valuable.

The District Data Books are a major step towards full transparency and towards informed planning and decision-making. They provide all available data at District, Khan, Commune and Sangkat level in easily accessible formats, in Khmer and English, through over 16,000 printed copies, CD-ROMs and the NCDD website.

This is the first time in Cambodia (and possibly in South East Asia) that such detailed information is made so widely available and NCDD should be commended for the hard work that has gone into this. We also thank the Ministry of Planning, which provided the detailed data of the Commune Data Base, the sectoral ministries and provincial authorities who contributed data and the Development Partners who provided financial support.

It is our sincere hope that the publication of the District Data Books will strengthen capacities, especially at district levels, for evidence-based development planning. We also hope that this information will deepen the understanding among Ministries, Provincial Authorities, Development Partners, NGOs and research agencies of the realities at commune and district levels.

We call upon all to use and distribute this information, complement or correct where appropriate and to contribute new data in the years to come.

Sar KHENG

Deputy Prime Minister, Minister of Interior and Chairman of NCDD

Introduction

Purpose

The purpose of the District Data Books is to bring together information on any aspect of life and development of Districts, Khans, Communes and Sangkat, together and make this widely available. The primary targets are the newly elected District Councilors, district level line departments, provincial agencies, Development Partners and NGOs operating at this level. They need detailed knowledge on current living conditions, natural resources, infrastructure, agriculture and other economic activities, current service levels, past and planned projects and available resources.

While much information exists on many of the above aspects, it is often hard to access that information and much is lost to reports, databases and statistics that are not widely shared. Data are often only available in one language and often out-of-date, and many reports cover only one sector or region.

We found that these problems are especially acute at the district level. Now that Districts are becoming a much more significant level of local government and development planning, there is an urgent need for wide-ranging data to be used for setting base-lines, planning and prioritizing, monitoring and learning.

Approach

We have attempted to identify and compile all available statistics, reports, maps and other data at district and/or commune level. From this we have selected information that is available for all or most districts, reasonably reliable and up-to-date, sufficiently detailed and of possible interest to development planners, decision makers, agencies and citizens.

The major sources of the information in these District Data Books are:

- a) The Commune Data Base information over the years 2006 to 2009 (the most recent data were collected late last 2008), as compiled by the Ministry of Planning
- b) Detailed information directly collected from the Ministry of Health, the Ministry of Education, Youth and Sports and (for maps) the Ministry of Land Management, Urban Planning and Construction
- c) The Project Information Database (PID) at NCDD (up-to-date)
- d) The Commune Development and Planning Database (CDPD) (up to date)
- e) The District Information System (DIS) (updated per Mid 2009)
- f) Direct data collection at provincial and district level on private sector, irrigation, roads, and electricity, through provincial agencies
- g) Medical data collected from MEDiCAM
- h) The ID Poor Project – for poverty data on a number of provinces and districts
- i) NCDD's work on predictive poverty rates
- j) Specific projects for outputs, plans and budgets (Seth Koma, RILGP, RPRP and ICC)

Limitations of the data

We are fully aware that the data we collected are not always complete, consistent or correct. While we have rejected information that was wrong or very incomplete, we decided not to aim for statistical and scientific perfection, but to include information that is useful, relevant

and comprehensive. We also accepted different sources for the same data as this may encourage discussion on the quality of the respective data.

We strongly encourage anyone who notes errors or incompleteness in these data to contact us and to share their data. We hope that the next round of producing such District Data Books can draw on wider sources and more complete data.

We encourage the District Administrations, who receive these data also in digital format, not only to use these for their planning and monitoring, but also to start correcting and updating these data and to share new data with NCDD for future use.

Contents

The information in the following pages is organized in five sections:

- a) **Geographical data:** this section provides maps on infrastructure and administration and on land use and natural resources management. These maps are also provided in large format to all Districts and Khans.
- b) **District Profile:** this presents wide ranging data, covering 2006 – 2009, at district and commune level, extracted from the Commune Data Base, but edited for better understanding.
- c) **Plans and Projects:** this section presents development priorities determined by Commune and Sangkat Councils, Temporary Agreements, outputs and expenditure of major projects at Commune and District level over 2006 – 2008 and plans and budgets for 2009.
- d) **Services and Organizations:** this section provides details on key infrastructure (roads, electricity, irrigation systems) and services in health and education at district and commune level. It also provides an inventory of resources at the District Administration, NGOs operating in the district and private sector agencies active in the district.
- e) **Poverty Data:** this section provides predicted poverty rates for 2009 for all districts and communes and detailed poverty data compiled and processed by the ID Poor project for those that have been covered by this project.

The future

It is our hope that this is the start of a longer-term process. We hope that a next edition of these District Data Books will offer more comprehensive, correct and up-to-date information. We hope that the District Administrations will not only start using this information, but also improve and update it. For this they are all provided with the full data set in digital format.

We invite agencies, projects and experts to send reports, statistics and maps that could be used for a next version to us and we invite all users of the District Data Books to inform us about errors, updates and inconsistencies. Please contact us through info@ncdd.gov.kh

We now invite you to browse through this data book. You may open this randomly or use the table of contents and go to the aspects that have your special interest.

We hope that you will be informed, surprised and assisted. We hope, above all, that this information will lead to a deeper understanding of causes and effects of poverty, to purposeful decisions on how to tackle those causes and to greater transparency in using scarce resources for the benefit of all.

Martin de Graaf
Program Advisor, PSDD/NCD

SECTION A: GEOGRAPHY

1 Administration and Infrastructure

Please see separate folder containing A3 maps.

2 Land Use and Natural Resources

Please see separate folder containing A3 maps

3 Geography

3.1 Land Area

Total Land Area (ha)	Forest Land Area (ha)		Cultivation Land Area (ha)	Construction Land Area (ha)	Other Land Area (ha)
	Total	Flooded Forest Area			
26500	9100	1364	14900	2500	0

3.2 Distances between Offices

Location	Distance (Km)
From District Office to C/S Office of Kampenh	2
From District Office to C/S Office of Ou Treh	0.02
From District Office to C/S Office of Tumnob Rolok	2

SECTION B: DISTRICT PROFILE¹

¹ All data in this section come from the Commune Database (CDB) unless otherwise specified. These include primarily new CDB data, collected late 2008, and some data from earlier years. Please note that percentages are rounded to the nearest whole number.

1 General Information

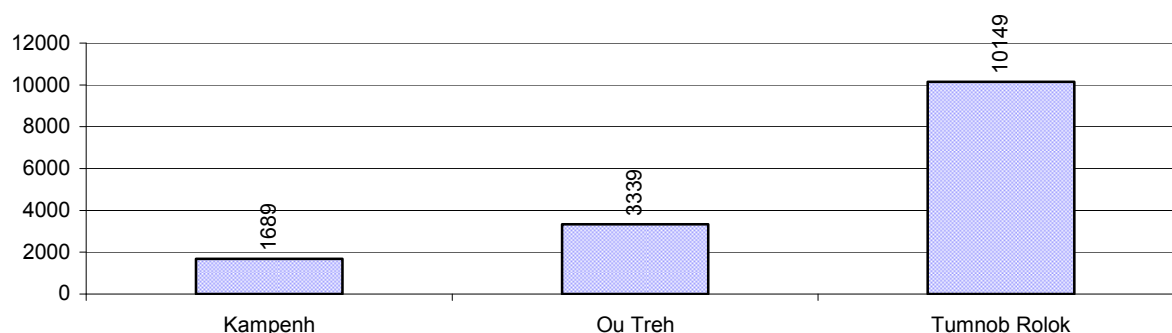
1.1 Population of the District

1.1.1 Total Population

Number of families	2005	2006	2007	2008
Total number of families	2,896 families	3,240 families	3,182 families	3,062 families
Increase (+)/Decrease (-) in nr of families		12%	-2%	-4%
Total population	15,487 pers	16,382 pers	15,727 pers	15,177 pers
Increase (+)/Decrease (-) in nr of people		6%	-4%	-3%
Number of female Headed Households (HH)	300 families	509 families	435 families	365 families

Note: Percentages of population and increase/decrease are calculated on basis of the previous year. A negative sign in front of the percentage indicates a decrease in population.

1.1.2 Population, by Commune, in 2008



1.1.3 Population, by Age Group, over 3 years

Population by age group	2006	2007	2008	
	%	%	%	Number
Age 0-5 years (as percentage of the population)	10%	11%	12%	1,886 persons
Male 0-5 yrs	47%	48%	51%	961 persons
Female 0-5 yrs	53%	52%	49%	925 persons
Age 6-17 (as percentage of the population)	33%	32%	28%	4,246 persons
Male 6-17 yrs	54%	54%	50%	2,139 persons
Female 6-17 yrs	46%	46%	50%	2,107 persons
Age 18-60 (as percentage of the population)	53%	53%	55%	8,381 persons
Male 18-60 yrs	49%	48%	51%	4,254 persons
Female 18-60 yrs	51%	52%	49%	4,127 persons
Age 61 above (as percentage of the population)	4%	4%	4%	664 persons
Male 61	48%	44%	47%	312 persons
Female 61	52%	56%	53%	352 persons

Note: The overall percentage for each age group is calculated on the basis of the total population. The gender distribution of each group is calculated on the basis of the population within that particular age group.

1.2 Occupations

1.2.1 Percentage of families with a particular Occupation over 3 years

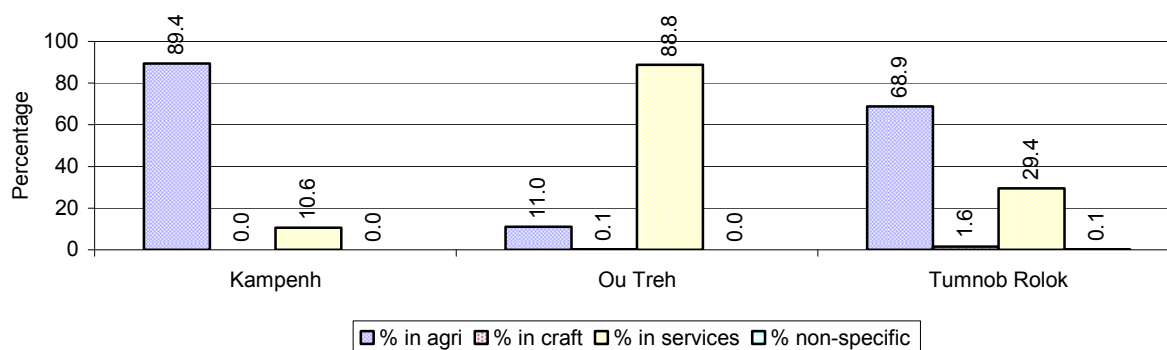
This table shows the percentage of the population who have a particular occupation (job), for example the percentage of the population in the district who are rice farmers, furniture crafter, trader, etc.

Description	2006	2007	2008	
	%	%	%	Number
Families whose main occupation is agriculture	57%	53%	57%	1,748 Families
Families whose primary occupation is rice farming	3%	3%	3%	107 Families
Families whose primary occupation is cultivating long-term crops	1%	1%	3%	104 Families
Families whose primary occupation is cultivating short-term crops	3%	3%	4%	120 Families
Families whose primary occupation is cultivating vegetable	6%	2%	1%	35 Families
Families whose primary occupation is fisherman	39%	40%	41%	1,252 Families
Families whose primary occupation is livestock farmer	4%	4%	3%	104 Families
Families whose primary occupation is NTFP collection	2%	1%	1%	26 Families
Families whose main occupation is craft work	1%	2%	1%	33 Families
Families, whose main occupation is in furniture craft, wooden, rattan, vine, bamboo	0%	0%	0%	2 Families
Families whose main occupation is in metal, aluminum, glass goods production	0%	0%	0%	3 Families
Families whose main occupation is food production	0%	1%	1%	26 Families
Families whose main occupation is tire, plastics and rubber goods production	0%	0%	0%	0 Families
Families whose main occupation is textile, clothing goods production	0%	0%	0%	0 Families
Families whose main occupation is in other production, not listed above	1%	1%	0%	2 Families
Families whose main occupation is services	19%	41%	42%	1,279 Families
Families whose main occupation is trade	7%	7%	4%	130 Families
Families whose main occupation is repair	3%	4%	2%	75 Families
Families whose main occupation is providing transport services	3%	4%	4%	122 Families
Families whose main occupation is providing other services	6%	27%	31%	952 Families
Families whose main occupation is not clear (or multi)	23%	4%	0%	2 Families

Note: The occupation percentages are calculated on the basis of the total number of families.

1.2.2 Percentage Families that work in one of four occupational sectors, by Commune in 2008

This table indicates the percentage of families involved in one of four occupation types: agriculture, craft, services or non-specific (other). Please note agriculture includes forestry activities such as cutting down trees and gathering gum from the trees.



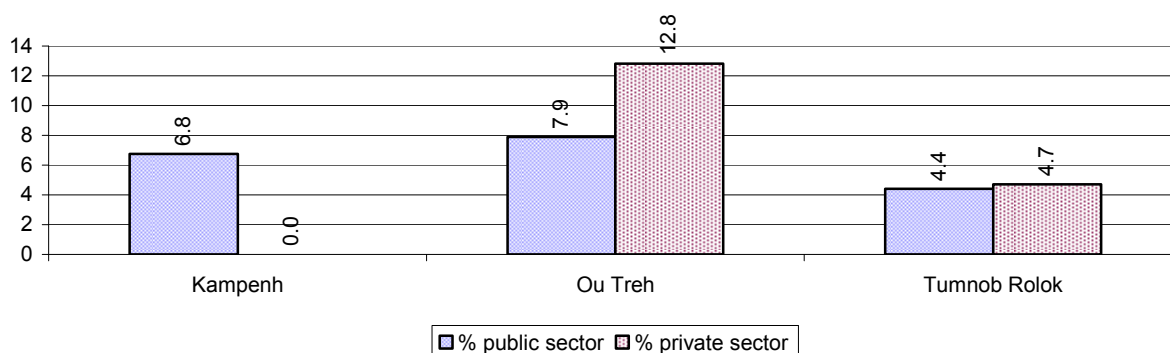
Note: Calculated on the basis of the total number of families within a commune.

1.2.3 Percentage of Families with public Sector, private Sector or uncertain Jobs, over 3 years

Description	2006	2007	2008	
	%	%	%	Number
Families that have a family member who is a government official, staff or worker	5%	5%	5%	168 families
Families that have a family member who is a private sector staff or worker	8%	7%	6%	189 families
Number of people aged 18-60 with uncertain/irregular jobs	16%	4%	14%	1,137 persons

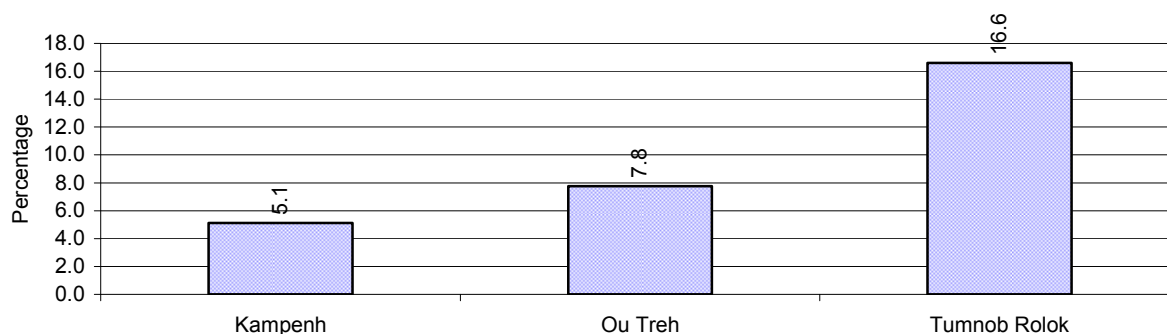
Note: In the first two rows percentages are calculated on the basis of the total number of families. In the third row the percentage is calculated on the basis of the total number of people aged 18-60 years.

1.2.4 Percentage of Families with public or private Sector Jobs, by Commune in 2008



Note: Calculated on the basis of the total number of families in the commune

1.2.5 Percentage of People aged 18-60 years with uncertain/irregular Jobs, by Commune, in 2008.



1.3 Property

1.3.1 Housing types and facilities over 3 years

This table shows the percentage of people living in a certain type of house. It also indicates how many houses have electricity or battery powered lights and how many have TV.

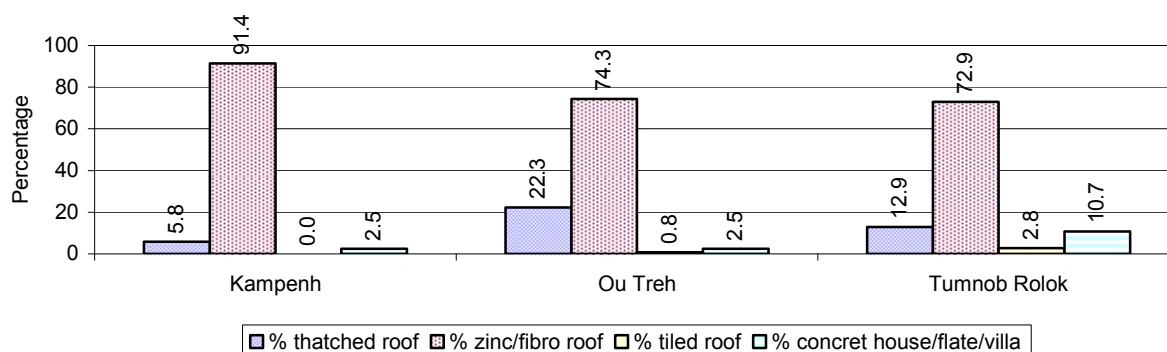
House Type	2006	2007	2008	
	%	%	%	Number
House with thatched roof	24 %	18 %	15 %	423 houses
House with zinc/fibro roof	71 %	75 %	75 %	2,190 houses
House with tiled roof	1 %	1 %	2 %	59 houses
Flats/apartments (with many families living)	0 %	1 %	1 %	24 houses
Concrete house or flat (with one family living)	3 %	5 %	7 %	201 houses
Villa house	1 %	1 %	1 %	18 houses
Houses with electricity	72 %	73 %	80 %	2,320 houses
Houses with battery light	19 %	23 %	15 %	436 houses
Houses with TV	54 %	66 %	68 %	1,978 houses

Note: Calculated against the total number of houses

1.3.2 Families living on public Land or without a permanent House

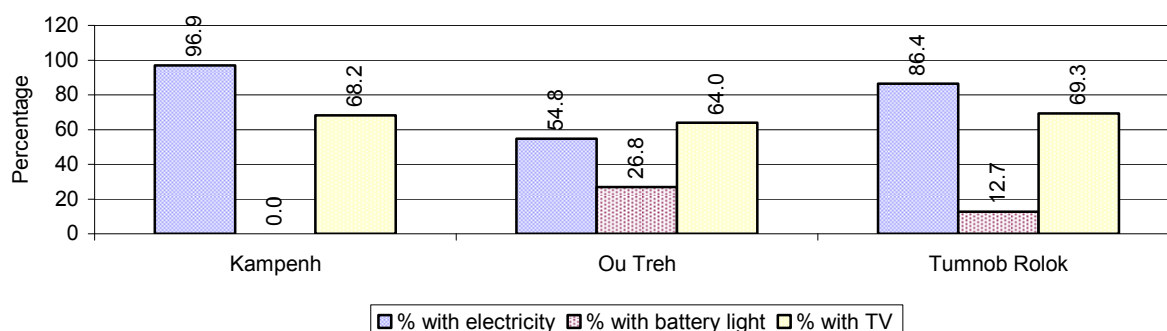
Living situation	2006	2007	2008
Families living in a house on public land	402 families	415 families	202 families
People, without permanent housing	19 person(s)	9 person(s)	3 person(s)

1.3.3 Percentage of Population living in a particular type of House, by Commune, in 2008



Note: Calculated against the total number of houses in each commune

1.3.4 Percentage of Houses with Electricity, Battery Lights and/or TVs, by Commune, in 2008



Note: Calculated against the total number of houses in each commune

1.3.5 Types of Vehicles and their ratio to Families across 3 years

This table shows the number of families per vehicle in the district. The last column shows the total number of each type of vehicle in the district for 2008.

Description	2006 ratio	2007 ratio	2008	
			Ratio	Number
Bicycle and bicycle with trailer	11	13	13	238
Ox-carts and horse-carts	135	199	204	15
Motorbike/with trailer	3	3	2	1,493
Motor tri-cycle	N/A	N/A	N/A	0
Large Transportation				
Total number of cars/trucks	15	12	10	297
Locally made vehicles	1,620	1,591	766	4
Trucks for goods transport	40	31	29	104
Buses/mini buses for passengers	98	133	96	32
Family cars	30	23	20	157
Agriculture machinery				
Tractors used for plowing	1,620	1,591	383	8
Power-tillage used for plowing	648	796	510	6
Other type of machinery				
Other type of machinery	810	796	54	57
Water transportation				
Row boats	70	78	15	201
Total number of motor boats				
Motor boats used for fishing	4	4	5	670
Motor boats used for passengers	540	530	236	13
Motor boats used for goods transporting	36	36	170	18

Note: Ratio of families to a particular type of vehicle is the result of the total number of families divided by total number of that type of vehicle. Other types of vehicles, such as bulldozer, excavator, rollers etc. are not listed.

2 Infrastructure and Economy

2.1 Roads in meters over 3 years

Description	2006	2007	2008
Bituminous road	0 m	0 m	0 m
DBST, Macadam road	0 m	1,006 m	1,251 m
Concrete road	0 m	0 m	641 m
Laterite road	18,739 m	11,219 m	13,194 m
Constructed earth road	0 m	250 m	0 m
Un-constructed earth road	1,800 m	0 m	0 m

2.2 Sewerage Pipes in meters over 3 years

Description	Sewage pipe length		
	2006	2007	2008
Total length of sewage pipe, diameter 30-50 cm	0 m	0 m	80 m
Length of newly constructed sewage pipe, diameter 30-50 cm	0 m	0 m	1,070 m
Length of sewage pipe, diameter 30-50 cm needs repair/rehabilitation	0 m	0 m	60 m
Total length of sewage pipe, diameter of pipe 60-100 cm	0 m	80 m	96 m
Length of newly constructed sewage pipe, diameter 60-100 cm	0 m	390 m	42 m
Length of sewage pipe, diameter 60-100 cm needs repair/rehabilitation	0 m	12 m	72 m
Sewage pipe, diameter of pipe over 100 cm	0 m	10 m	50 m
Length of newly constructed sewage pipe, diameter over 100 cm	0 m	0 m	20 m
Length of sewage pipe, diameter over 100 cm needs repair/rehabilitation	0 m	0 m	30 m

2.3 Drainage and Bridges

Construction Type	2006		2007		2008	
	place(s)	Length	place(s)	Length	place(s)	Length
Single pipe culvert	40	400m	34	274 m	25	202 m
Double-pipe culvert	0	0m	2	18 m	1	10 m
Box pipe culvert	0	0m	1	7m	11	97 m
Wooden bridge	1	75m	0	0m	0	0 m
Concrete bridge	0	0m	0	0m	0	0 m
Bale bridge	0	0m	0	0m	0	0 m
Spillway construction	1	650m	0	0m	1	10 m

2.4 Services in the District

Descriptions	Number of places by year		
	2006	2007	2008
Public			
Electricity generating stations	2	2	2
Health clinics	1	0	0
Private			
Bicycle and motorcycle repair places	9	6	11
Agricultural machinery, tools and equipment repair places	0	0	0
Electronic tool repair places	3	7	7
Battery-charging services	5	5	5
Handicraft places, wooden furniture and forest by-products	3	2	2
Other handicraft places (excluding furniture)	5	5	3

Descriptions	Number of places by year		
	2006	2007	2008
Small-scale services (hairstresser, phone service, massage, Karaoke, etc)	17	14	17
Small-scale food shop businesses (Food, groceries, drink shop, etc)	38	40	39
Small-scale rice mills	0	0	0
Medium or large-scale rice mills	0	0	0
Small-scale markets	2	2	3
Large-scale market	1	1	1
Alcohol refinery places	9	5	5
Pharmacies and small drug stores	14	7	7
Hotels	0	0	0
Guest houses	1	1	2
Restaurants	1	0	3
Gasoline stations	0	1	2

2.5 Agriculture

2.5.1 Rice cultivation in the District over 3 years

Description	2006	2007	2008
Total dry rice land area	0 ha	0 ha	0 ha
Actual dry rice cultivation area	0 ha	0 ha	0 ha
% actual cultivation to total land	-%	-%	-%
Total dry rice production	- tonne(s)	- tonne(s)	- tonne(s)
Average dry rice yield	- tonne(s)/ha	- tonne(s)/ha	- tonne(s)/ha
Total wet rice land area	8 ha	0 ha	0 ha
Actual wet rice cultivation area	8 ha	0 ha	0 ha
% actual cultivation to total land	100 %	-%	-%
Total wet rice production	16.00 tonne(s)	- tonne(s)	- tonne(s)
Average wet rice yield	2.0 tonne(s)/ha	- tonne(s)/ha	- tonne(s)/ha
Total intensive rice land area	0 ha	0 ha	0 ha
Actual intensive rice cultivation area	- ha	- ha	- ha
Average intensive rice yield	- tonne(s)/ha	- tonne(s)/ha	- tonne(s)/ha
Actual upland rice cultivation area	2 ha	0 ha	0 ha
Total upland rice production	5 tonne(s)	- tonne(s)	- tonne(s)
Average upland rice yield	2.5 tonne(s)/ha	- tonne(s)/ha	- tonne(s)/ha

2.5.2 Estimated wet and dry Season Rice Yield in tonne(s)/Ha, by Commune, in 2008

There is no estimated wet and dry season rice yield for in this District in 2008

2.5.3 Cultivated wet and dry Season Rice areas in Ha, by Commune, in 2008

There were no wet and dry season rice areas cultivated in this District in 2008

2.5.4 Estimated intensive Rice Yields in tonnes/Ha, by Commune, for 2008

There were no estimated intensive rice yields in this District in 2008

2.5.5 Estimated upland Rice Yield in tonnes/Ha, by Commune, for 2008

There were no estimated upland rice yields in this District in 2008

2.5.6 Wet season Rice irrigation across 3 years

Description		2006 %	2007 %	2008	
				%	Number
Total area of wet season rain fed rice land		100%	-%	- %	0 ha
Percentage of wet season rice land that is irrigated; and for 2008 area in Ha		0 %	- %	- %	0 ha
Where	Area irrigated from canal/dam	- %	- %	- %	0 ha
	Area irrigated from river, stream, lake, natural pond	- %	- %	- %	0 ha
	Area irrigated from drilled well	- %	- %	- %	0 ha
	Area irrigated from dug pond	- %	- %	- %	0 ha

2.5.7 Water sources for wet Season Rice Cultivation, by Commune, in 2008

This chart shows the percentage of wet season rice cultivation receiving water from rain (natural) and from irrigation.

-

2.5.8 Access to Irrigation

Description	2006 %	2007 %	2008	
			%	Number
Families who have access to irrigation water	0%	0%	0%	0 families
Families who have irrigation wells	0%	0%	0%	0 families

Note: Calculated against the total number of families are rice farmers

2.5.9 Number of Irrigation Wells over 3 years

Description	2006	2007	2008
Number of irrigation wells	0 wells	0 wells	0 wells

2.5.10 Percentage of Families with access to (supplemental) Irrigation for wet Season Rice cultivation, by Commune, in 2008

There are no families with access to supplemental irrigation for wet season rice irrigation in this District in 2008

Note: % of families, with access to irrigation is calculated against the total number of families, whose main occupation is rice farming. Irrigated wet rice land area is calculated against the total actual wet rice land cultivated areas

2.5.11 Irrigation Wells, by Commune, in 2008

There are no irrigations wells in this District in 2008

2.5.12 Farmers owning less than one hectare of Rice Land

Description	2006 %	2007 %	2008	
			%	Number
Families who have less than one hectare of rice land	48%	57%	83%	89 families
Families who do not own any rice land	36%	32%	14%	15 families

Note: Calculated on basis of total number of families who are rice farming

2.5.13 Percentage of Farmers with less than one Hectare or no Rice Land, by Commune, in 2008

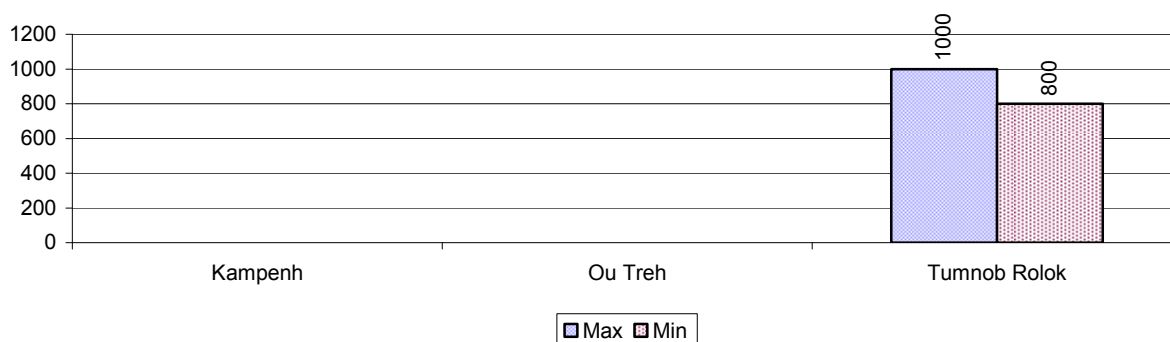


Note: Calculated on basis of total number of families who are rice farming

2.5.14 Average farm-gate Prices of Rice, over 3 years

Description	2006	2007	2008
Maximum average farm gate price	875 Riels/Kg	650 Riels/Kg	1,000 Riels/Kg
Minimum average farm gate price	750 Riels/Kg	600 Riels/Kg	800 Riels/Kg
Average farm gate price	813 Riels/Kg	625 Riels/Kg	900 Riels/Kg
Average rice production per person	1 Kg/person	0 Kg/person	0 Kg/person

2.5.15 Minimum and maximum farm-gate Prices of Rice in Riel/kg, by Commune, in 2008



2.5.16 Production of Paddy in Kgs/Person, by Commune, in 2008

This table shows how much paddy (harvested rice) is produced in a year in a commune, in kgs per person.

There was no paddy produced in this District in 2008

2.5.17 Production of other Crops, over 3 years

Crops	2006	2007	2008
Corn cultivation area	0 ha	0 ha	0 ha
Estimated corn yield	- tonne(s)/ha	- tonne(s)/ha	- tonne(s)/ha
Estimated corn production	- tonne(s)	- tonne(s)	- tonne(s)
Soya bean cultivation area	0 ha	0 ha	0 ha
Estimated Soya bean yield	- tonne(s)/ha	- tonne(s)/ha	- tonne(s)/ha
Estimated Soya bean production	- tonne(s)	- tonne(s)	- tonne(s)
Mungbean cultivation area	0 ha	0 ha	0 ha

Crops	2006	2007	2008
Estimated Mungbean yield	- tonne(s)/ha	- tonne(s)/ha	- tonne(s)/ha
Estimated Mungbean production	- tonne(s)	- tonne(s)	- tonne(s)
Peanut cultivation area	0 ha	0 ha	0 ha
Estimated Peanut yield	- tonne(s)/ha	- tonne(s)/ha	- tonne(s)/ha
Estimated Peanut production	- tonne(s)	- tonne(s)	- tonne(s)
Cassava cultivation area	0 ha	0 ha	0 ha
Estimated Cassava yield	- tonne(s)/ha	- tonne(s)/ha	- tonne(s)/ha
Estimated Cassava production	- tonne(s)	- tonne(s)	- tonne(s)
Sweet potatoes cultivation area	0 ha	0 ha	0 ha
Estimated Sweet potatoes yield	- tonne(s)/ha	- tonne(s)/ha	- tonne(s)/ha
Estimated Sweet potatoes production	- tonne(s)	- tonne(s)	- tonne(s)
Sesame cultivation area	0 ha	0 ha	0 ha
Estimated Sesame yield	- tonne(s)/ha	- tonne(s)/ha	- tonne(s)/ha
Estimated Sesame production	- tonne(s)	- tonne(s)	- tonne(s)

2.5.18 Yields of Corn, Soya beans and Mungbeans in tonne(s)/ha, by Commune, in 2008

There were no yields for any of these crops in this District in 2008

2.5.19 Yields of Peanuts and Cassava in tonne(s)/ha by Commune, in 2008

There were no yields for any of these crops in this District in 2008

2.5.20 Yields of Sweet Potatoes and Sesame in tonne(s)/ha, by Commune, in 2008

There were no yields for any of these crops in this District in 2008

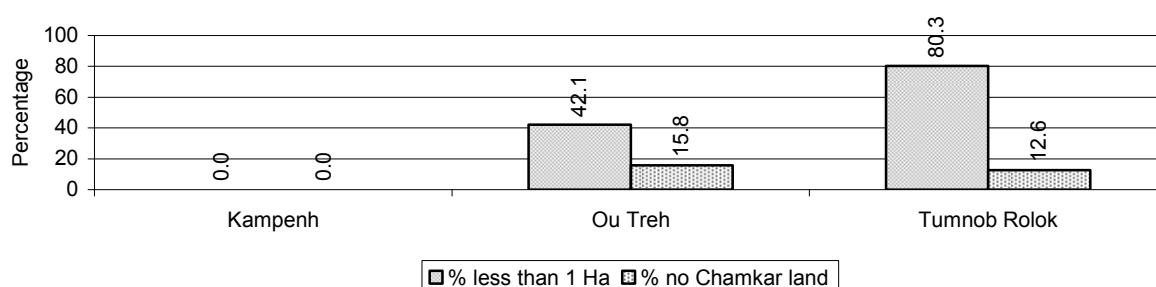
2.5.21 Percentage Farmers who own less than 1 Ha or no Chamkar land

Description	2006	2007	2008	
	%	%	%	Number
Families, who own less than 1ha of Chamkar land	20%	36%	77%	199 families
Families, with no Chamkar land	68%	51%	13%	33 families

Note 1: Calculated as a percentage of the total number of families whose main occupation is Chamkar (not rice) farming

Note 2: Chamkar land is no-rice land, i.e. other crops

2.5.22 Percentage Farmers owning less than 1 ha or no Chamkar land, by Commune, in 2008



Note: Percentage is calculated among families, who Chamkar farm as a main occupation, not the total population of the commune.

2.5.23 Percentage of Families raising Cattle/Buffalo, over 3 years

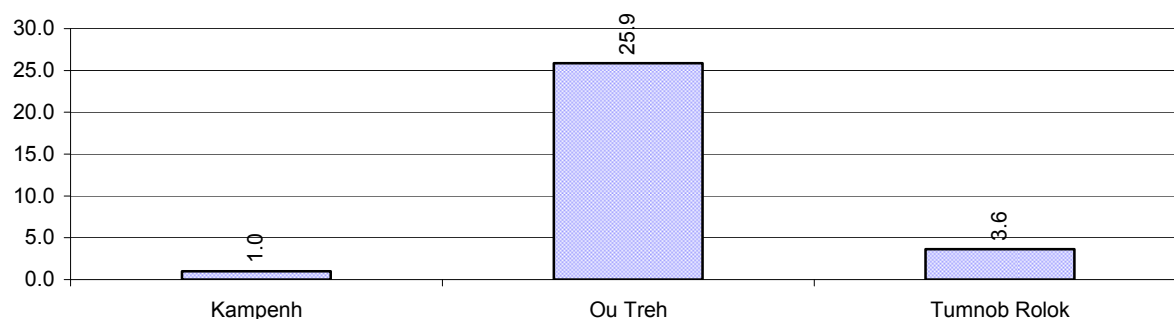
Description	2006 %	2007 %	2008	
			%	Number
Families raising cattle/buffalo	5%	3%	2%	67 families
Families raising cattle/buffalo as labor forces	4%	1%	0%	15 families

Note: Calculated against the total number of families.

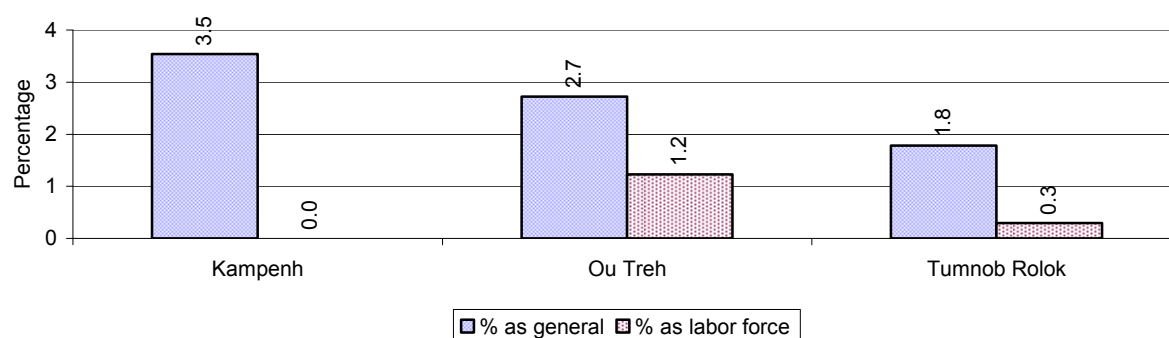
2.5.24 Number of Cattle/buffalo being raised, over 3 years

Description	2006	2007	2008
Total number of cattle/buffalo	944 head(s)	998 head(s)	659 head(s)
Average cattle/buffalo per families	5.3 head(s)/families	10.5 head(s)/families	10 head(s)/families

Note: Calculated by dividing total number of cattle/buffalo by total number of cattle/buffalo raising families

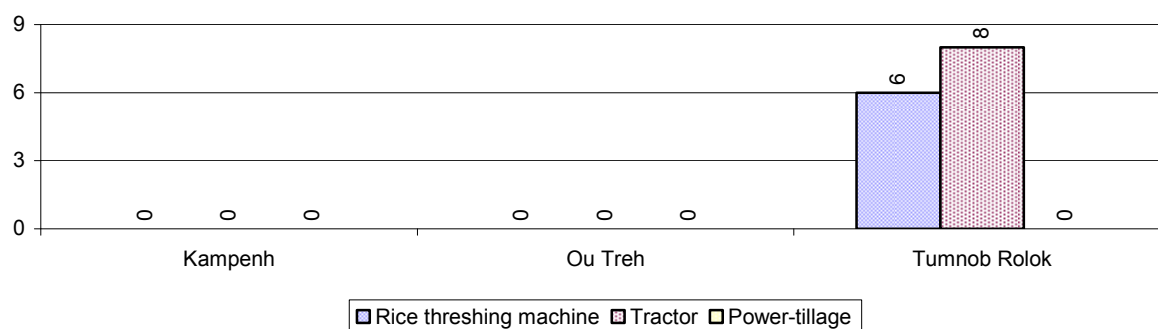
2.5.25 Average number of Cattle/Buffalo per Family, by Commune, in 2008

Note: Calculated by dividing total number of cattle/buffalo by total number of cattle/buffalo raising families

2.5.26 Percentage Families raising Cattle/Buffalo, for general and labor purposes in 2008, by Commune

Note: Calculated using the total number of families raising cattle/buffalo against the total number of families.

2.5.27 Type and number of agricultural Machines, by Commune, in 2008

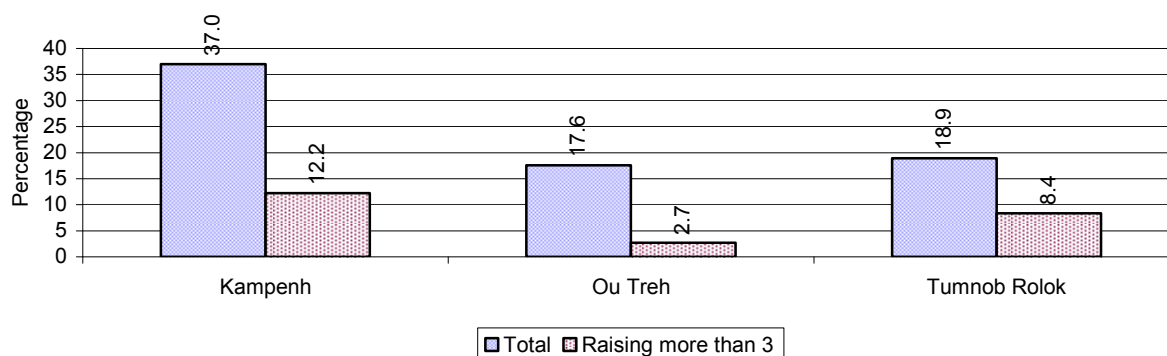


2.5.28 Livestock-producing Households over 3 years

Description	2006	2007	2008	
	%	%	%	Number
Total number of families raising pigs	26%	19%	20%	626 families
number of families raising more than 3 pigs	9%	5%	7%	227 families
Total number of families raising chickens	43%	42%	52%	1,587 families
number of families raising more than 3 chickens	22%	21%	36%	1,109 families
Total number of families raising ducks	4%	4%	9%	264 families
number of families raising more than 5 ducks	3%	2%	7%	200 families
Total number of families raising goats or sheep	0%	0%	0%	4 families
Total number of families raising horses	0%	0%	0%	0 families

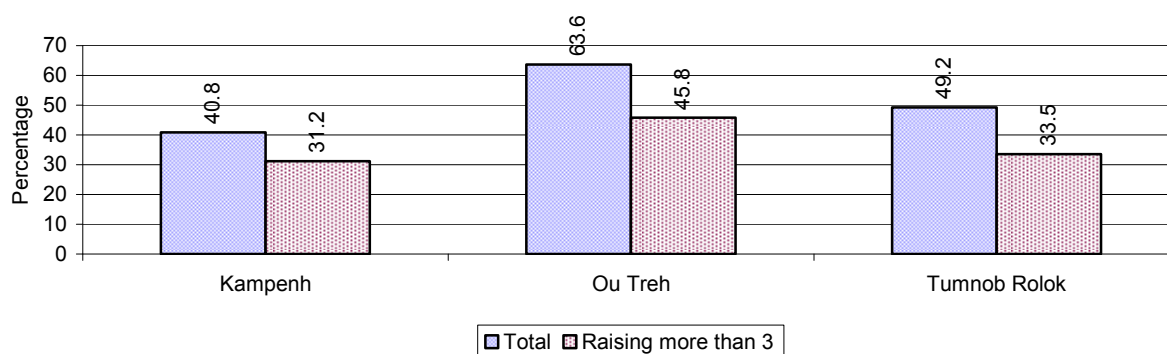
Note: Calculated against the total number of families

2.5.29 Percentage Families raising Pigs, by Commune, in 2008



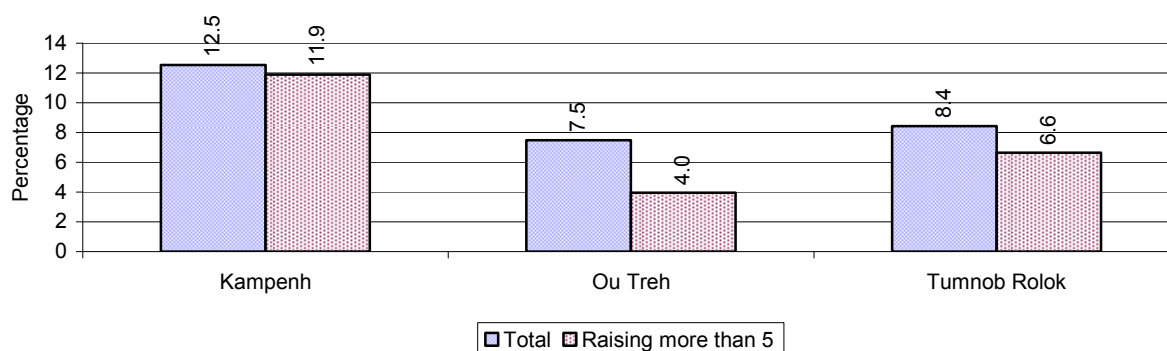
Note: Calculated against the total number of families in the commune

2.5.30 Percentage Families raising Chickens, by Commune, in 2008



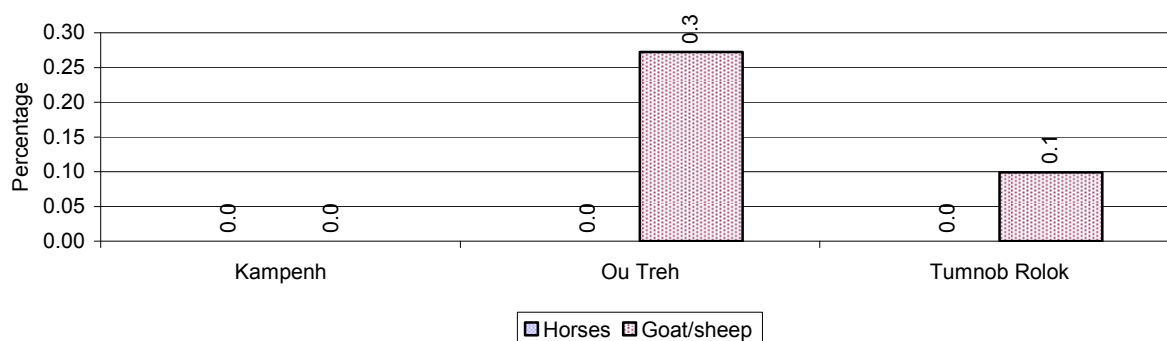
Note: Calculated against the total number of families in the commune

2.5.31 Percentage Families raising Ducks, by Commune, in 2008



Note: Calculated against the total number of families in the commune

2.5.32 Percentage Families raising Horses, Goats or Sheep, by Commune, in 2008

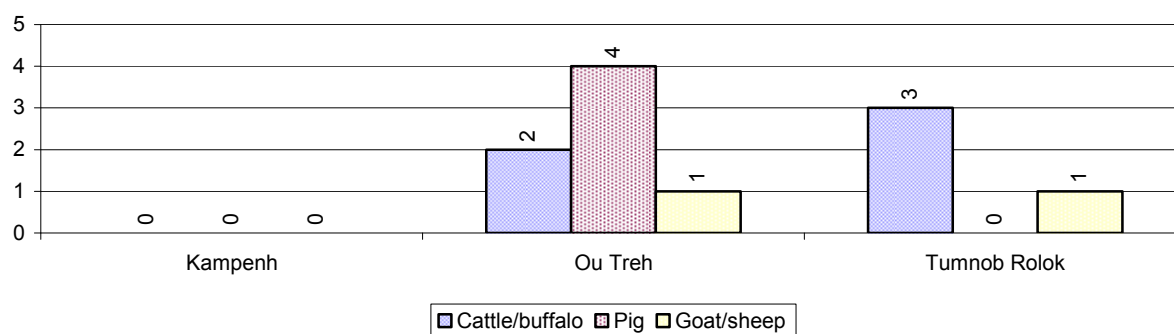


Note: Calculated against the total number of families in the commune

2.5.33 Livestock Farms over 3 years

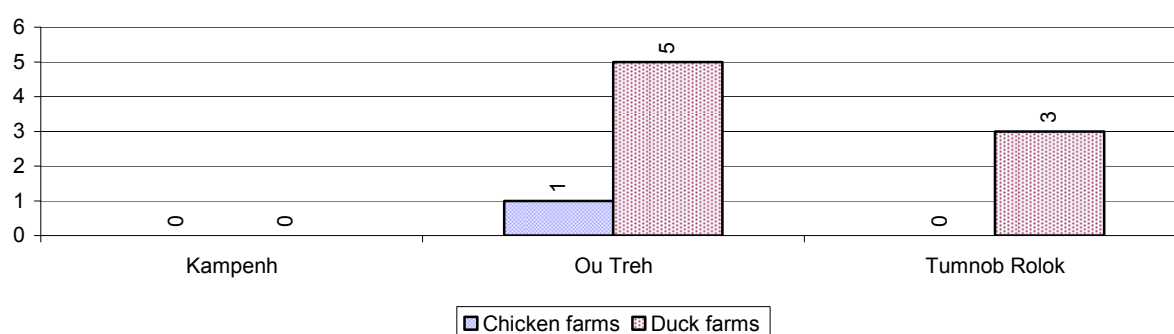
Description	2006	2007	2008
Number of cattle/buffalo farms	4 farm(s)	1 farm(s)	5 farm(s)
Number of pig farms	2 farm(s)	0 farm(s)	4 farm(s)
Number of goat/sheep farms	0 farm(s)	0 farm(s)	2 farm(s)
Number of chicken farms	0 farm(s)	1 farm(s)	1 farm(s)
Number of duck farms	11 farm(s)	16 farm(s)	8 farm(s)

2.5.34 Number Livestock Farms, by Commune in 2008



Note: Number of farms are recorded by the village chief, not by counting number of livestock in each farm

2.5.35 Number Chicken and Duck Farms, by Commune, for 2008



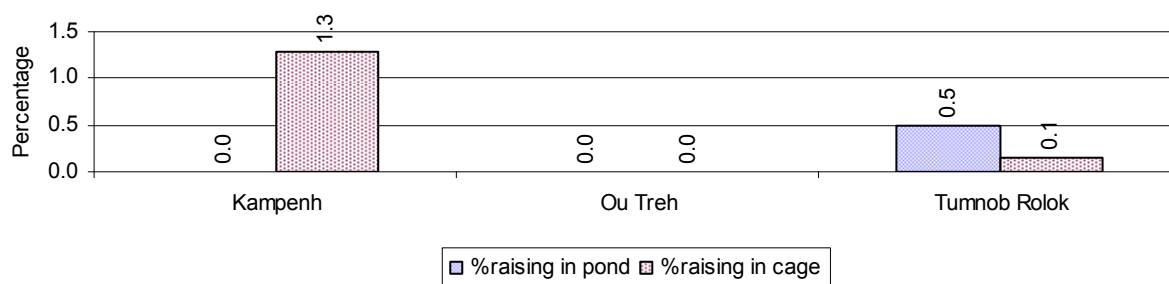
Note: Number of farm places recorded by village chief, not by counting number of livestock in each farm

2.5.36 Families raising Fish over 3 years

Description	2006	2007	2008
Total number of families raising fish	8 families	7 families	17 families
% families raising fish	0%	0%	1%
Number families raising fish in pond	5 families	3 families	10 families
% families raising fish in pond	0%	0 %	0%
Number fish pond	16 pond(s)	4 pond(s)	10 pond(s)
No. of ponds per family	3.2 pond/families	1.3 pond/families	1.0 pond/families
Number of families raising fish in cage	3 families	4 families	7 families
%families raising fish in cage	0 %	0 %	0%
Number of fish cage	5 cage(s)	50 cage(s)	74 cage(s)
No. of fish cage per family	1.7 cage /families	12.5 cage /families	10.6 cage /families

Note: % of families raising fish or fish in ponds or cages is calculated a percentage of the total number of families.

2.5.37 Percentage of Families raising Fish, by Commune, in 2008



Note: Calculated as a percentage of the total number of families in the commune.

2.5.38 Shrimp and Prawn Farming over 3 years

Description	2006	2007	2008
Number of families raising shrimps	0 families	0 families	0 families
% Families raising shrimps	0%	0%	0%
Number of shrimp ponds	0 pond	0 pond	0 pond
Total area raising shrimps	0 ha	0 ha	0 ha
Area per family	-ha/families	-ha/families	-ha/families
Number of families raising prawns	0 families	0 families	0 families
% families raising prawns	0%	0%	0%
Number prawn ponds	0 pond	0 pond	0 pond
Ponds per families	- pond/families	-pond/families	-pond/families
Number of prawn cages	0 cage	0 cage	0 cage
Cages per families	0 cage /families	0 cage /families	0 cage /families

Note: Percentage of families raising either prawns or shrimp is calculated against the number of families, who do aquaculture farming, NOT the total population.

2.5.39 Numbers of Families raising Shrimps and number of Shrimp Ponds, by Commune, in 2008

There were none of these in this District in 2008

2.5.40 Number of Families raising Prawn and Number of Prawn Ponds/Cages, by Commune, in 2008

There were none of these in this District in 2008

3 Social Aspects

3.1 Education

3.1.1 Kindergarten in the District over 3 years

Description	2006	2007	2008
Number of community kindergarten schools	1 school(s)	0 school(s)	0 school(s)
Number of community kindergarten class rooms	1 room(s)	0 room(s)	0 room(s)
Number of community kindergarten classes	1 class(es)	0 class(es)	1 class(es)
Number of community kindergarten teachers	0 person(s)	0 person(s)	1 person(s)
Number of women community kindergarten teachers	0 women	0 women	1 women
Number of state and private kindergarten schools	3 school(s)	3 school(s)	3 school(s)
Number of state and private kindergarten class rooms	1 room(s)	4 room(s)	4 room(s)
Number of state and private kindergarten classes	2 class(es)	4 class(es)	4 class(es)
Number of state and private kindergarten teachers	4 person(s)	5 person(s)	4 person(s)
Number of women state and private kindergarten teachers	4 women	5 women	4 women

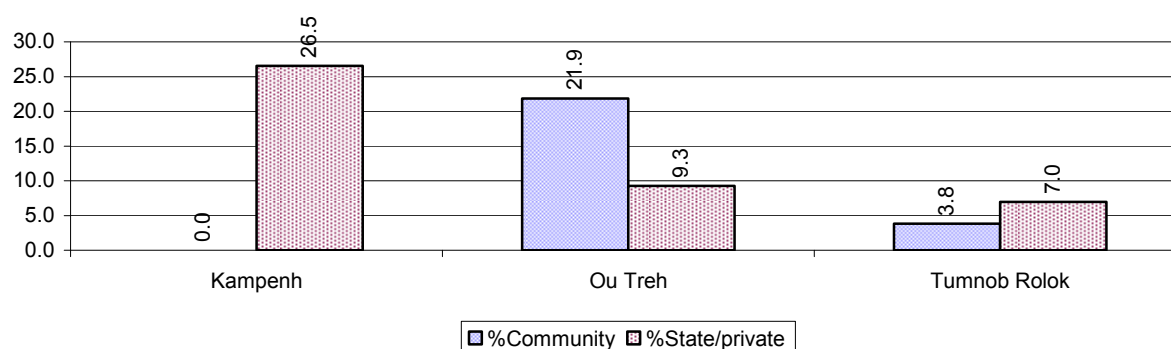
3.1.2 Percentage enrolment at Kindergarten level over 3 years

This table shows the percentage of the total 3-5 year old population attending kindergarten.

Description	2006 %	2007 %	2008	
			%	Number
Total percentage of children, 3-5 yrs, go to kindergarten	12%	14%	18%	206 person(s)
Percentage of children, 3-5 yrs, go community kindergarten	4%	3%	8%	95 person(s)
Percentage children, 3-5 yrs, go state/private kindergarten	7%	11%	9%	111 person(s)

Note: Calculated against the total for that age group

3.1.3 Percentage of Children 3-5 yrs attending Kindergarten, by Commune, in 2008



3.1.4 Basic Education over 3 years

Primary School

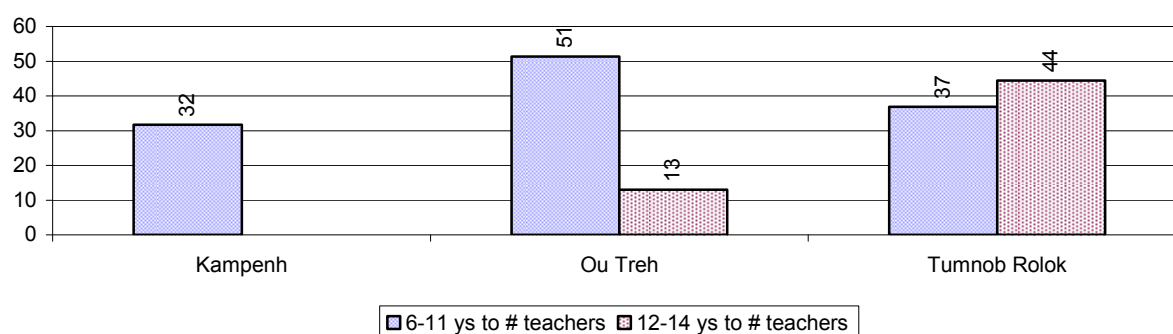
Description	2006	2007	2008
Number of primary schools	3 school(s)	3 school(s)	3 school(s)
Number of primary school rooms	41 room(s)	43 room(s)	49 room(s)
Number of primary classes	48 class(es)	42 class(es)	49 class(es)
Number of primary teachers	48 person(s)	49 person(s)	49 person(s)
Ratio of children 6-11 yrs to school	828	755	626
Ratio of children 6-11 yrs to school room	61	53	38
Ratio of children 6-11 yrs to class	52	54	38
Ratio of children 6-11 yrs to teacher	52	46	38

Note: According to education norm, children 6-11 yrs should attend primary school, while 12-14 yrs should be in lower secondary school, but in reality this varies.

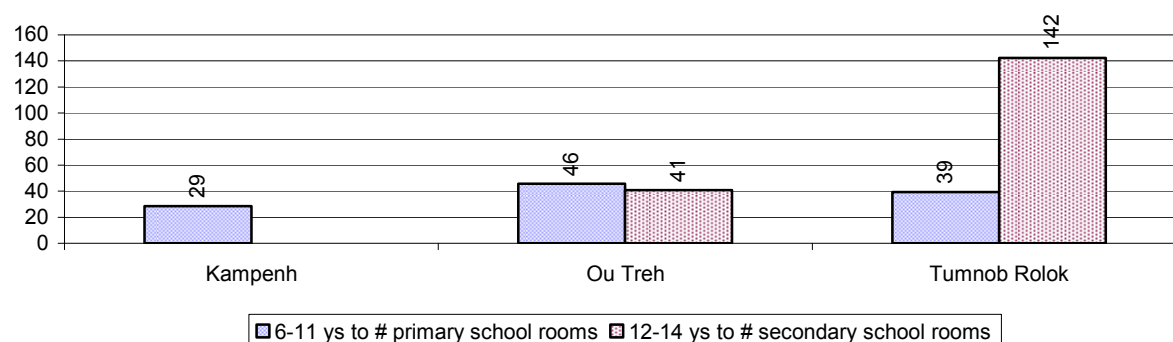
Lower Secondary School

Description	2006	2007	2008
Number of lower secondary schools	2 school(s)	3 school(s)	2 school(s)
Number of lower secondary school rooms	14 room(s)	18 room(s)	12 room(s)
Number of lower secondary classes	12 class(es)	13 class(es)	15 class(es)
Number of lower secondary teachers	27 person(s)	30 person(s)	38 person(s)
Ratio children 12-14 yrs to school	715	486	607
Ratio of children 12-14 yrs to school room	102	81	101
Ratio of children 12-14 yrs to class	119	112	81
Ratio of children 12-14 yrs to teacher	53	49	32

3.1.5 Ratio of 6-11 year old and 12-14 year old Children to number of Teachers, by Commune, in 2008



3.1.6 Ratio of 6-11 year old and 12-14 year old Children to number of School Rooms, by Commune, in 2008



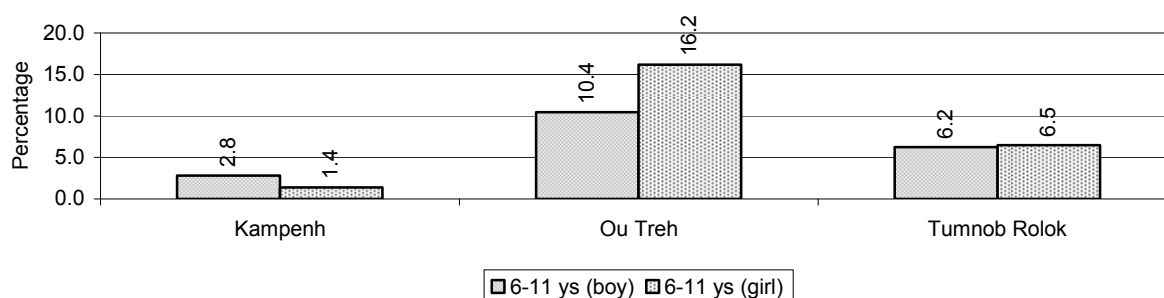
3.1.7 Enrolment status at Primary Level over 3 years

Description	2006 %	2007 %	2008	
			%	Number
Total children aged 6-11 years old	15%	14%	12%	1,877 person(s)
Total children aged 6-11 who are in school	86%	88%	93%	1,741 person(s)
Total children aged 6-11 who are not in school	14%	12%	7%	136 person(s)
Total girls aged 6-11 years old	14%	13%	13%	940 person(s)
Total girls aged 6-11 who are in school	85%	87%	92%	866 person(s)
Total girls aged 6-11 who are not in school	15%	13%	8%	74 person(s)
Total boys aged 6-11 years old	16%	15%	12%	937 person(s)
Total boys aged 6-11 who are in school	86%	88%	93%	875 person(s)
Total boys aged 6-11 who are not in school	14%	12%	7%	62 person(s)

Note 1: Percentage is calculated on the basis of the total number of children within 6-11 year age group for the first 3 rows and for the total girls and the total boys aged 6-11 yrs.

Note 2: Number of girls aged 6-11 who are in & not in school is calculated against the total number of girls aged 6-11 yrs. Number boys, 6-11 yrs who are in & not in school are calculated against the total number of boys aged 6-11 yrs.

3.1.8 Percentage of 6-11 year old Children not in School, by Commune, in 2008



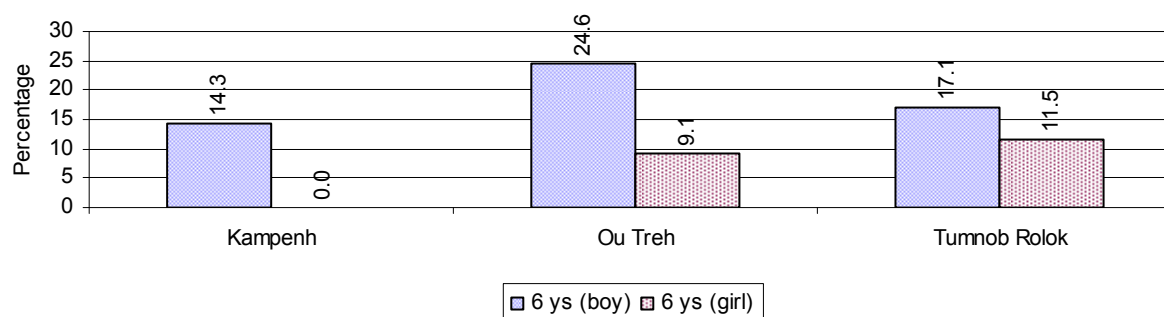
Note: calculated on the basis of the total number of children within 6-11 year age group in the commune.

3.1.9 Enrolment of 6 year old Children over 3 years

Description	2006 %	2007 %	2008	
			%	Number
Total % and number of children aged 6 years old	3%	2%	3%	458 person(s)
Total % of children aged 6 years old in school	68%	75%	82%	375 person(s)
Total % of children aged 6 years old not in school	32%	25%	18%	83 person(s)

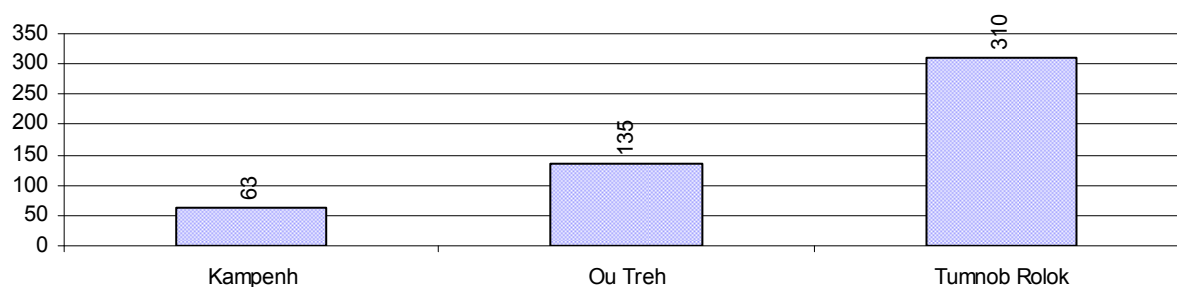
Note: First row calculated as a percentage of total population. Second and third row calculated as a percentage of the total number of 6 year olds.

3.1.10 Percentage of 6 year old Children not in School, by Commune, in 2008



Note: Calculated as a percentage of total 6 year old population

3.1.11 Number of 5 year old Children in each Commune in 2008

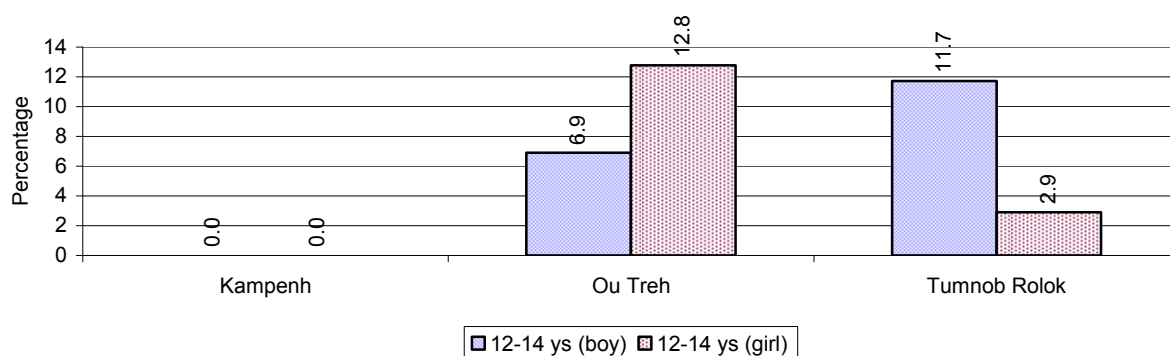


3.1.12 Enrolment at Lower Secondary Level over 3 years

Description	2006 %	2007 %	2008	
			%	Number
Total children aged 12-14 years old	9%	9%	8%	1,213 person(s)
Children aged 12-14 years old in school	88%	90%	93%	1,132 person(s)
Children aged 12-14 years old not in school	12%	10%	7%	81 person(s)
Total girls aged 12-14 years old	9%	9%	8%	589 person(s)
Girls aged 12-14 years old in school	86%	88%	95%	561 person(s)
Girls aged 12-14 years old not in school	14%	12%	5%	28 person(s)
Total boys aged 12-14 years old	9%	10%	8%	624 person(s)
Boys aged 12-14 years old in school	89%	90%	92%	571 person(s)
Boys aged 12-14 years old not in school	11%	10%	8%	53 person(s)

Note: Percentage is calculated on the basis of number of the total number of children within 12-14 yrs group, except for the first row of each section which is calculated on the basis of the total population.

3.1.13 Percentage of 12-14 year olds not in School, by Commune, in 2008



Note: Calculated as a percentage of the total 12-14 year old population in each commune

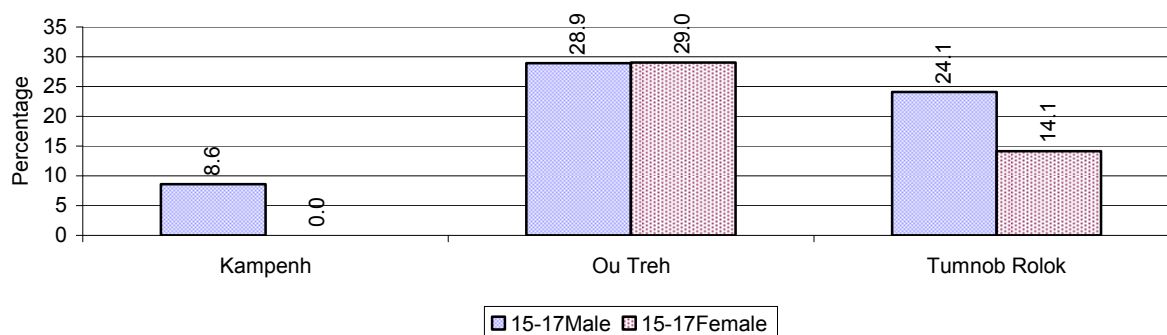
3.1.14 Upper Secondary Schools over 3 years

Description	2006	2007	2008
Number of upper secondary schools	1 school(s)	1 school(s)	1 school(s)
Number of upper secondary school rooms	5 room(s)	7 room(s)	7 room(s)
Number of upper secondary classes	5 class(es)	7 class(es)	7 class(es)
Number of upper secondary teachers	10 person(s)	6 person(s)	8 person(s)
Ratio of 15-17 yr olds to number of school	1,563	1,360	1,156
Ratio of 15-17 yr olds to number of school room	313	194	165
Ratio of 15-17 yr olds to number of classes	313	194	165
Ratio of 15-17 yr olds to number of teacher	156	227	145

3.1.15 Enrolment of 15-17 year old teenagers over 3 years

Description	2006	2007	2008
Number of teenage, 15-17 years old	1,563 person(s)	1,360 person(s)	1,156 person(s)
Number of teenage, 15-17 years old, who are not studying	559 person(s)	463 person(s)	228 person(s)
Percentage of teenage, 15-17 years old not studying	36%	34%	20%

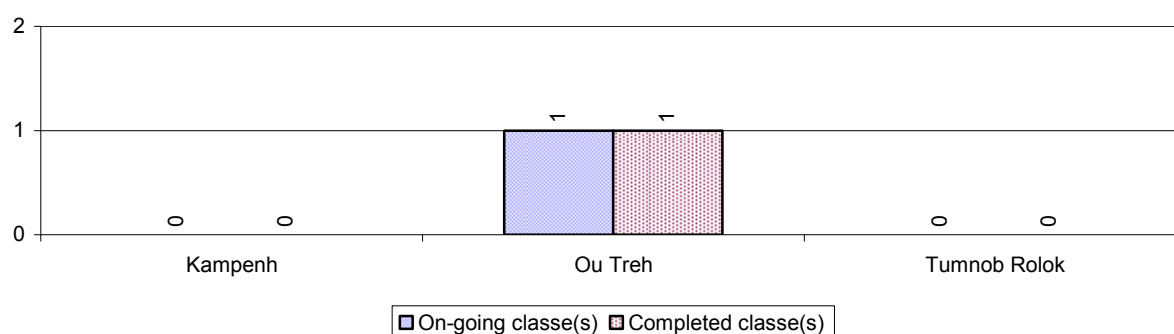
3.1.16 Percentage of 15-17 year old Teenagers not at School, by Commune, in 2008



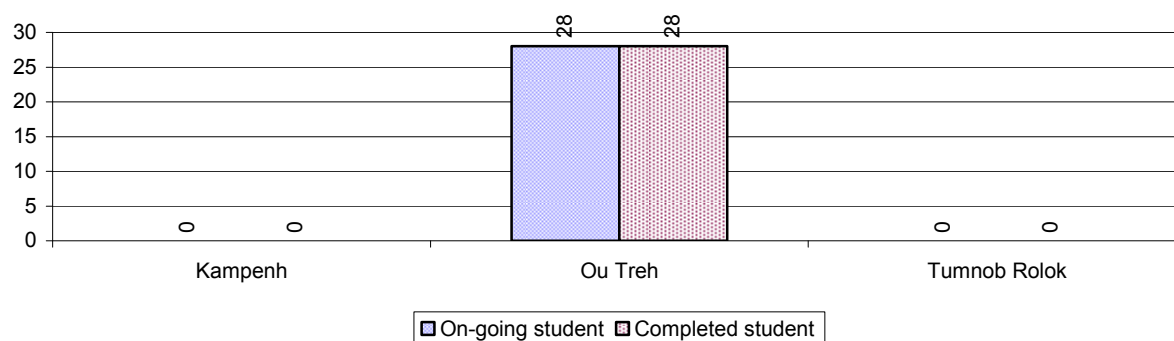
3.1.17 Literacy Classes as of 2008

Literacy classes	Organized by:		Other Program(s)	Total
	PDoEYS	NGOs		
Number of On-going literacy classes	0 class(es)	1 class(es)	0 class(es)	1 class(e(s)
Number of literacy students in on-going classes	0 person(s)	28 person(s)	0 person(s)	28 person(s)
Completed literacy class(es)	0 classes	1 classes	0 classes	1 classes
Number of literacy students that have completed literacy classes	0 person(s)	28 person(s)	0 person(s)	28 person(s)
Number of students that passed	0 person(s)	28 person(s)	0 person(s)	28 person(s)

3.1.18 Number of on-going and completed Literacy Classes, by Commune, in 2008



3.1.19 Students of on-going & completed Literacy Classes, by Commune, in 2008

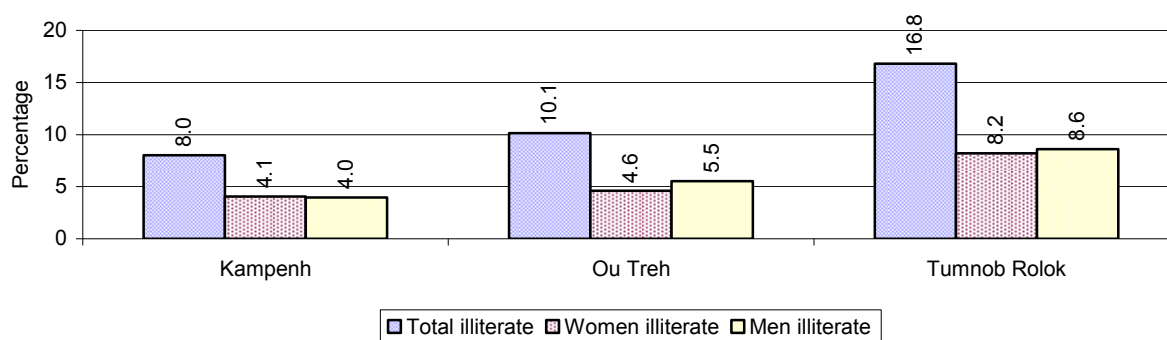


3.1.20 Percentage of illiterate People between 15-60, over 3 years

Illiteracy Status	2006 %	2007 %	2008	
			%	Number
Illiterate people, 15-60 years old	12%	9%	15%	1,383 person(s)
Illiterate females, 15-60 years old	8%	5%	7%	669 person(s)
Illiterate people, 15-17 years old	9%	5%	6%	69 person(s)
Illiterate females, 15-17 years old	5%	3%	4%	44 person(s)
Illiterate people, 18-24 years old	8%	4%	4%	92 person(s)
Illiterate females, 18-24 years old	5%	3%	2%	52 person(s)
Illiterate people, 25-60 years old	15%	12%	20%	1,222 person(s)
Illiterate females, 25-60 years old	10%	7%	9%	573 person(s)

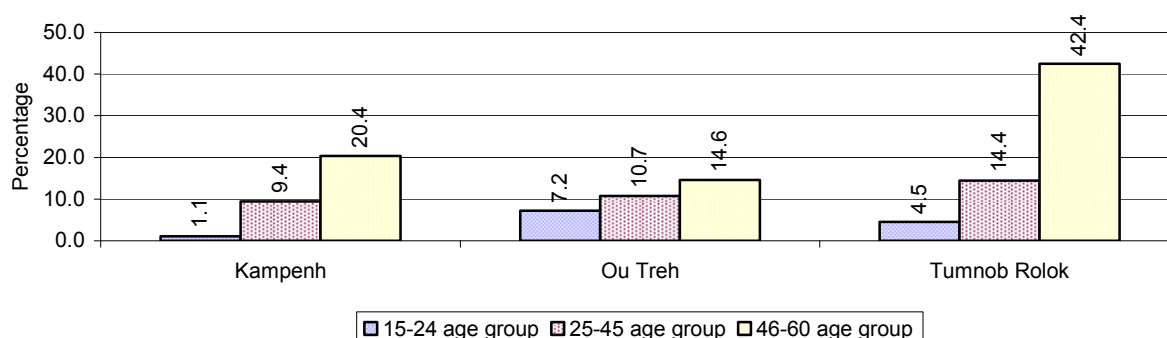
Note: Percentage is calculated on the basis of number of people in age each group.

3.1.21 Percentage illiterate People among 15-60 yrs old, by Commune, in 2008



Note: Percentages are calculated on the basis of number of people in that age group.

3.1.22 Percentage illiterate People for 15-24 yrs, 25-45 yrs and 46-60 yrs, by Commune, in 2008



Note: Percentage of illiterate people in each age group is calculated on the basis of number of people in that age group.

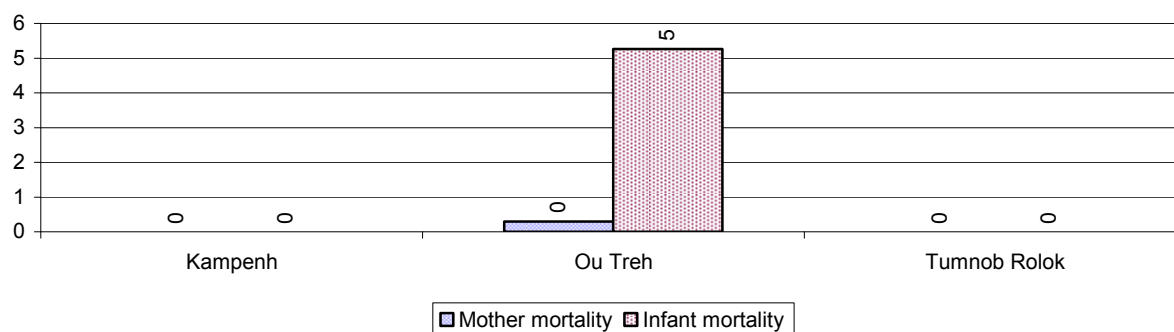
3.2 Health

3.2.1 Health Situation of Women and Children, over 3 years

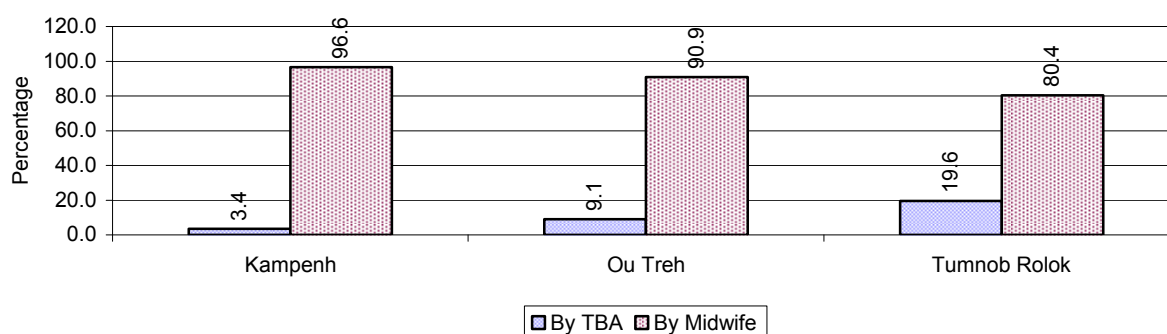
Description	2006	2007	2008
Number families with a birth during the year	171 families	224 families	277 families
Number of women who had their baby delivered by a TBA	26 person(s)	21 person(s)	45 person(s)
Percentage of women who had their baby delivered by a TBA	15 %	9 %	16 %
Number of women who had their baby delivered by a midwife	145 person(s)	203 person(s)	232 person(s)
Percentage of women had their baby delivered by a midwife	85 %	91 %	84 %
Number of mothers who died within 1 month of giving birth	4 person(s)	2 person(s)	1 person(s)
Mothers who died within 1 month of giving birth per 100,000 families having a delivery	2,339	893	361
Number of infants born during the year	171 person(s)	226 person(s)	277 person(s)
Number of Infants who died within 1 month	1 person(s)	5 person(s)	1 person(s)
Infants mortality within 1 month per 1,000 births	6	22	4
Number of children who died below the age of 5.	4 person(s)	3 person(s)	2 person(s)
Number of infants, aged 9-12 months, born during the year	35 person(s)	95 person(s)	177 person(s)
Nr. infants, aged 9-12 months, not receiving full immunization	0 person(s)	0 person(s)	0 person(s)
% of 9-12 months infants, not receiving full immunization	0 %	0 %	0 %

Note: TBA = Traditional Birth Attendant

3.2.2 Mothers dying within 0 days to 1 month of giving Birth and Infants dying within 1 month in 2008, by Commune

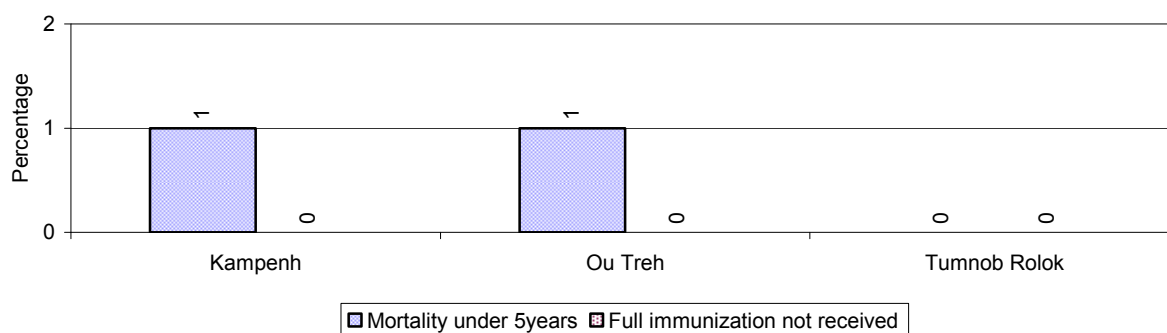


3.2.3 Percentage of Women delivering with a TBA or Midwife, by Commune



Note: Calculated as a percentage of total deliveries

3.2.4 Percentage of Children dying below 5 & of 9-12 months not receiving full Immunization, by Commune, in 2008



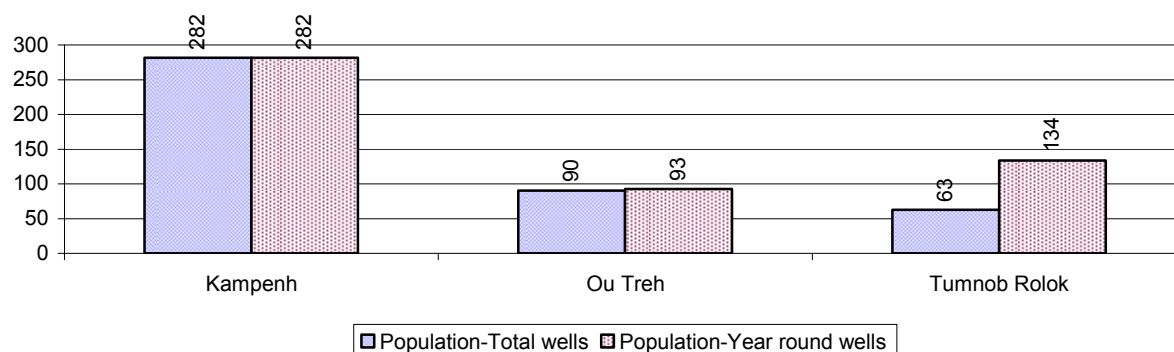
Note: Mortality rate calculated as a percentage of the total 5 year old population. Lack of immunization received calculated as a percentage of the total number 9-12 months olds there are

3.3 Water and Sanitation

3.3.1 Number of different types of Wells over 3 years

Type of wells	Number of wells by year		
	2006	2007	2008
<i>Total number of pumped or mixed wells</i>	104	118	79
Year-round usable pumped or mixed wells	87	92	43
Dry season unusable pump or mixed wells	17	26	36
Pump or mixed wells needing repair/rehabilitation	29	36	25
<i>Total number of ring wells</i>	126	122	126
Year-round usable ring wells	102	96	75
Dry season unusable ring wells	24	26	51
Ring wells needing repair/rehabilitation	24	31	38
<i>Total number of unprotected dug wells</i>	47	49	63
Year-round usable unprotected dug wells	35	37	48
Dry season unusable unprotected dug wells	12	12	15

3.3.2 Ratio of People to Wells, by Commune, in 2008

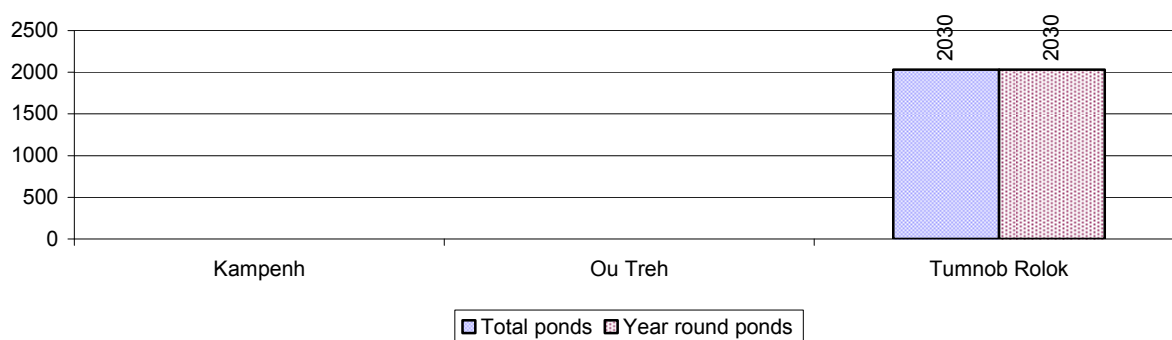


Note: Year-round wells excluding unprotected wells

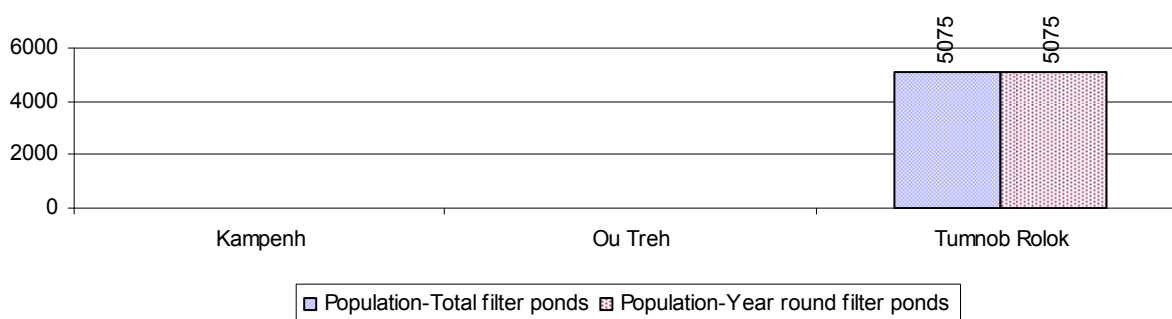
3.3.3 Potable Ponds over 3 years

Type of Pond	2006	2007	2008
<i>Total number of normal-type ponds</i>	4 pond	4 pond	5 pond
Year-round usable normal-type ponds	4 pond	4 pond	5 pond
Dry season unusable normal-type ponds	0 pond	0 pond	0 pond
Normal-type ponds needing repair/rehabilitation	1 pond	1 pond	0 pond
<i>Total number of filter ponds</i>	1 pond	2 pond	2 pond
Year-round usable filter ponds	1 pond	2 pond	2 pond
Filter ponds, dry season unusable	0 pond	0 pond	0 pond
Filter ponds needing repair/rehabilitate	0 pond	1 pond	0 pond

3.3.4 Ratio of People to normal Ponds, by Commune in 2008



3.3.5 Ratio of People to Filter Ponds, by Commune, in 2008

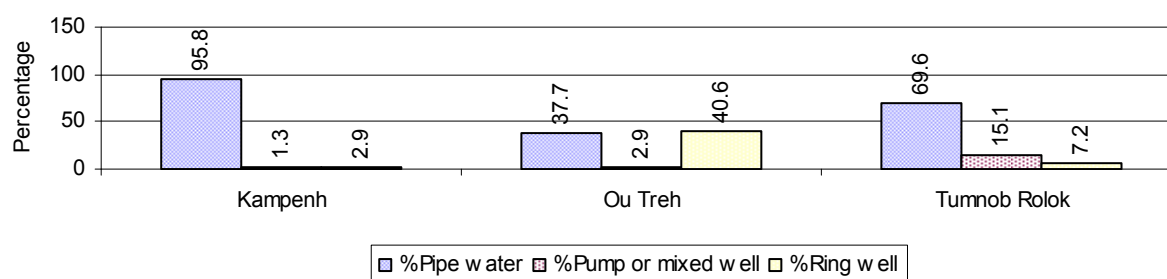


3.3.6 Source of potable Water for Households, over 3 years

Water sources	2006	2007	2008	
	%	%	%	Number
Families using water from purification system	10%	59 %	65 %	1,979 families
Families using water from pump, mixed wells	8%	12 %	11 %	329 families
Families using water from ring wells and open dug wells	13%	17 %	15 %	453 families
Families using water from pond	3%	1 %	1 %	33 families
Families using water from rain water storage	4%	4 %	2 %	67 families
Families using water from rivers, lakes, natural ponds and reservoirs	62%	6 %	7 %	201 families

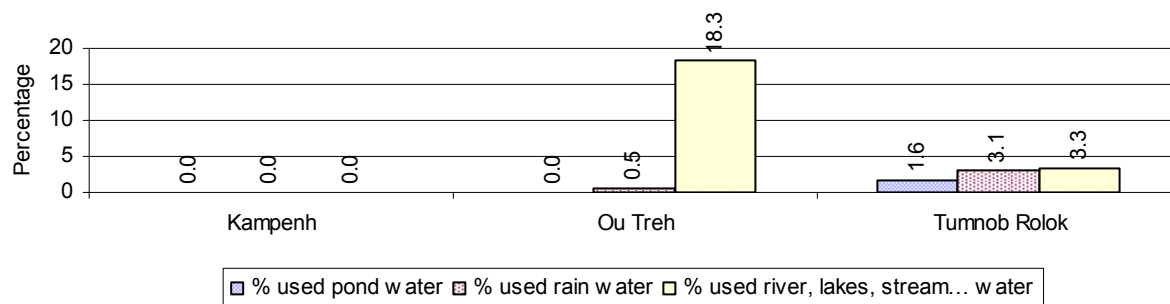
Note: Calculated as a percentage of the total number of families.

3.3.7 Percentage Families using different Water Sources, by Commune, in 2008



Note: Calculated as a percentage of the total number of families in each commune

3.3.8 Percentage Families using Water from Rain Water Storage, Ponds and natural Sources (rivers/lakes/natural ponds/reservoirs), by Commune, 2008



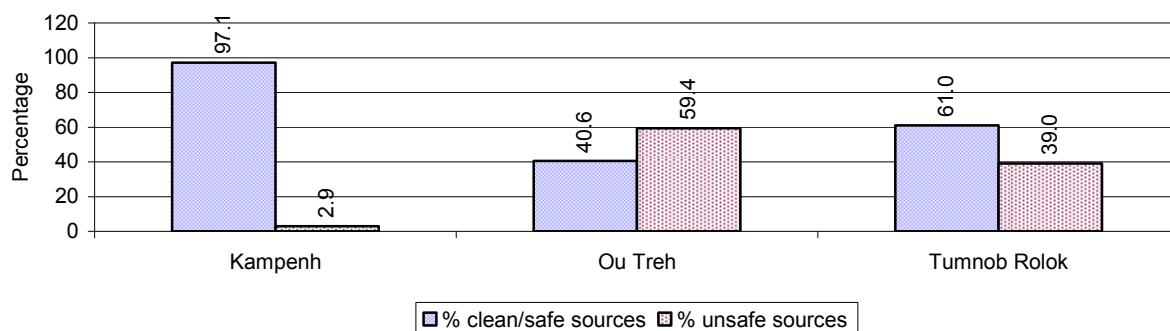
Note: Calculated as a percentage of the total number of families in each commune

3.3.9 Drinking Water Sources in the dry Season over 3 years

Percentage Families that get drinking water from:	2006	2007	2008	
	%	%	%	Number
from clean/safe sources	27 %	73 %	60 %	1,830 families
from unsafe sources	73 %	27 %	40 %	1,232 families

Note: Calculated as a percentage of the total number of families.

3.3.10 Percentage Families using safe and unsafe Water Sources in the dry Season, by Commune, in 2008



Note: Calculated as a percentage of the total number of families in each commune.

3.3.11 Drinking Water Purification by Households, over 3 years

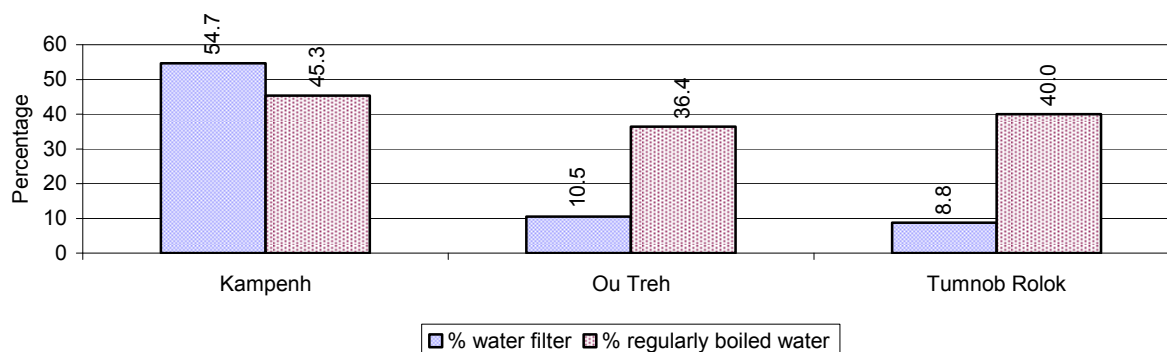
This table shows the different ways families make water safe for drinking.

Families, who:	2006	2007	2008	
	%	%	%	Number
Filter water for drinking	3%	14%	14 %	424 families
Boil water for drinking	44%	53%	40 %	1,214 families

Note: Calculated as a percentage of the total number of families

3.3.12 Percentage Families filtering Water or regularly boiling Water, by Commune, in 2008

This graph shows the different ways families make drinking water safe.



Note: Calculated on as a percentage of the total number of families in each commune.

3.3.13 Families' access to Water, over 3 years

Families access to water	2006	2007	2008	
	%	%	%	Number
Families with water at home or in less then 150m	66%	68%	75 %	2,294 families
Families with water 150m or more away from home	5%	9%	6 %	183 families

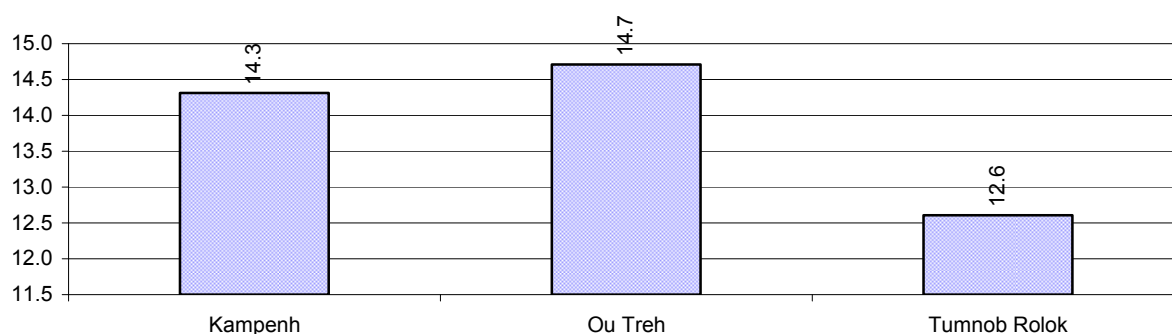
Note: Calculated as a percentage of the total number of families

3.3.14 Ratio of people to Latrines over 3 years

Description	2006	2007	2008	
	Ratio	Ratio	Ratio	Number
Ratio of people to latrines	15.1	13.4	13.2	1,150.0

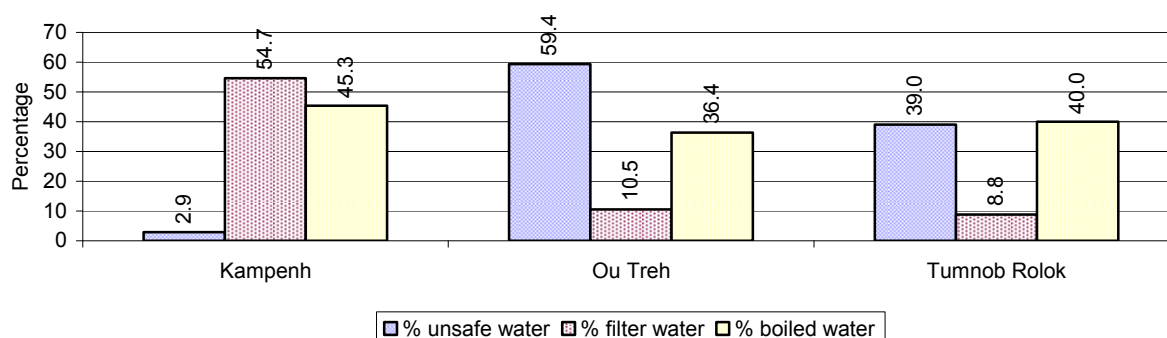
Note: Ratio calculated by dividing the number of houses with latrines by the total population

3.3.15 Ratio of People to Latrines, by Commune, in 2008



Note: Ratio calculated by dividing the number of houses with latrines by the total population in a Commune.

3.3.16 Percentage of Families drinking boiled, filtered or unsafe Water, by Commune, in 2008



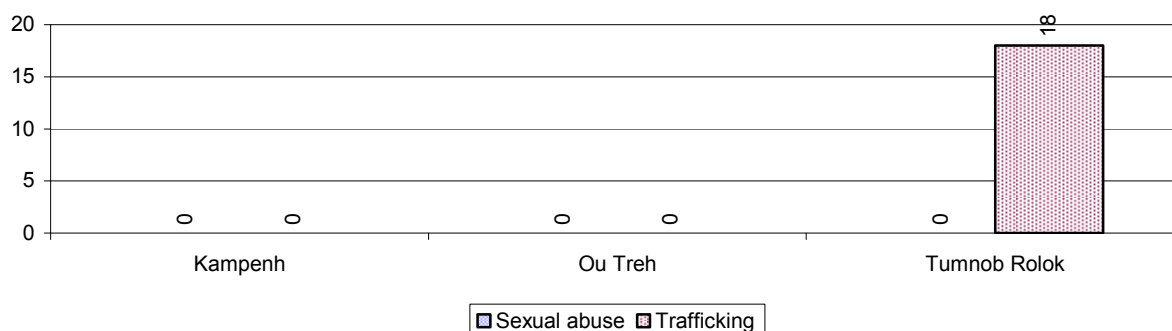
Note: Calculated as a percentage of the total number of families in each commune.

3.4 Vulnerable groups

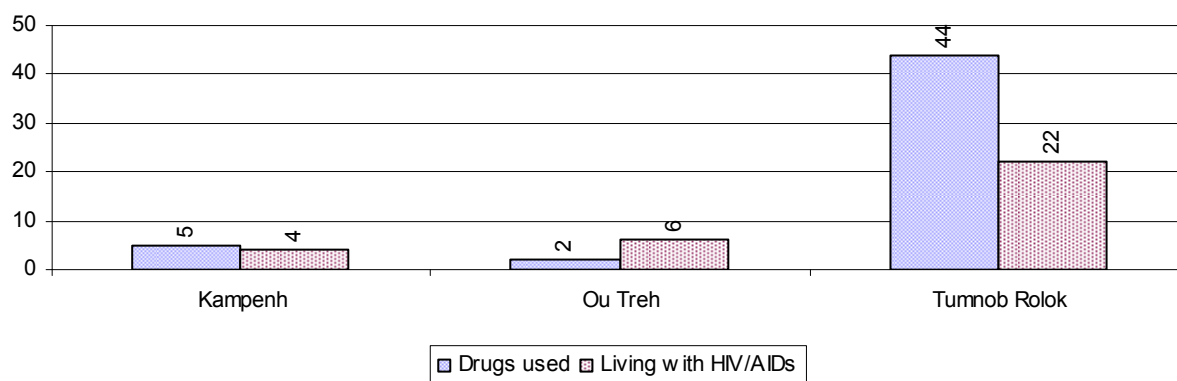
3.4.1 Vulnerable Groups in need of special Protection over 3 years

Vulnerable groups	2006	2007	2008
Victims of sexual abuse	1 person(s)	0 person(s)	0 person(s)
Victims of human trafficking	0 person(s)	0 person(s)	18 person(s)
Families with family member(s) using drugs	72 families	54 families	51 families
Families with family member(s) living with HIV/AIDS	39 families	38 families	32 families
Children under 18 yrs old whose parent died of AIDS	32 person(s)	31 person(s)	19 person(s)
Orphaned/abandoned children under 18 yrs old (all cases)	47 person(s)	45 person(s)	25 person(s)
Elderly persons without guardian	14 person(s)	24 person(s)	25 person(s)
Disabled people able to earn an income	127 person(s)	24 person(s)	18 person(s)
Disabled people unable to earn an income	27 person(s)	25 person(s)	24 person(s)
Disabled people under 18 yrs old	7 person(s)	7 person(s)	5 person(s)
Victims of natural disasters	1 families	0 families	1 families
Victims of land mines and unexploded weapons	0 person(s)	0 person(s)	0 person(s)

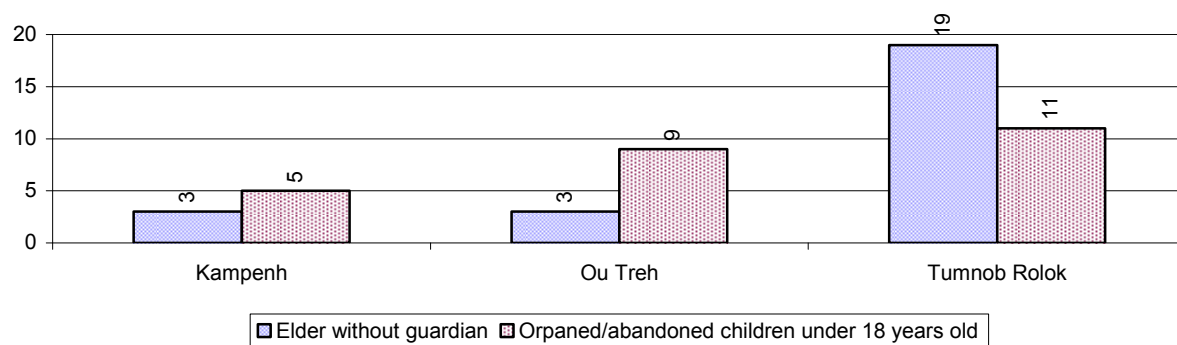
3.4.2 Registered Victims of sexual Abuse or Trafficking, by Commune, for 2008



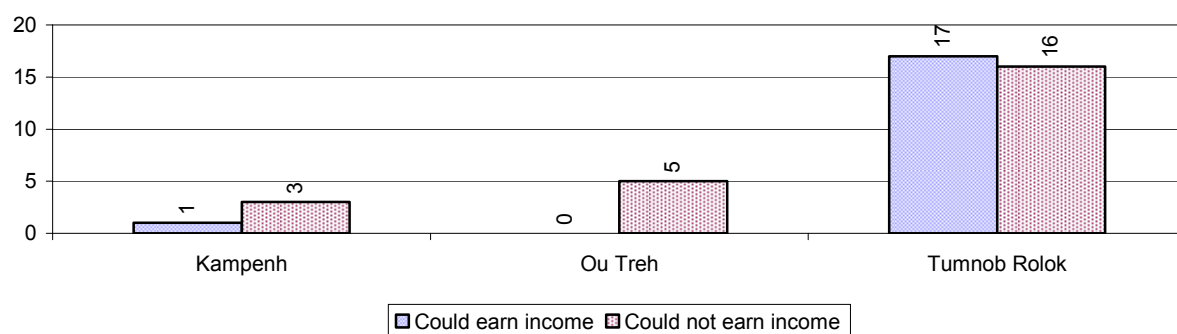
3.4.3 Registered Families with Member(s) using Drugs or living with HIV/AIDS, by Commune, for 2008



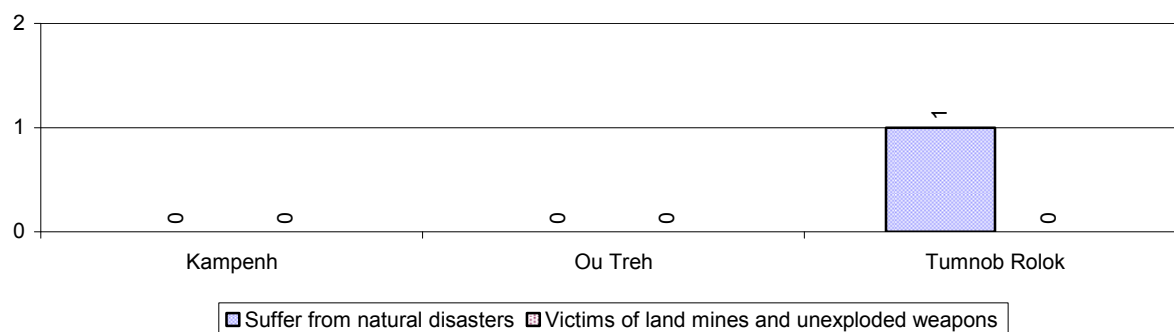
3.4.4 Elderly Persons without a Guardian and orphaned/abandoned Children under 18 years old, by Commune, for 2008



3.4.5 Number of disabled People who could or could not earn an Income, by Commune, for 2008



3.4.6 Number of Families who suffered from natural Disasters, and number of Victims of Land Mines and unexploded Weapons, by Commune, in 2008



3.5 Migration

3.5.1 Migration over 3 years

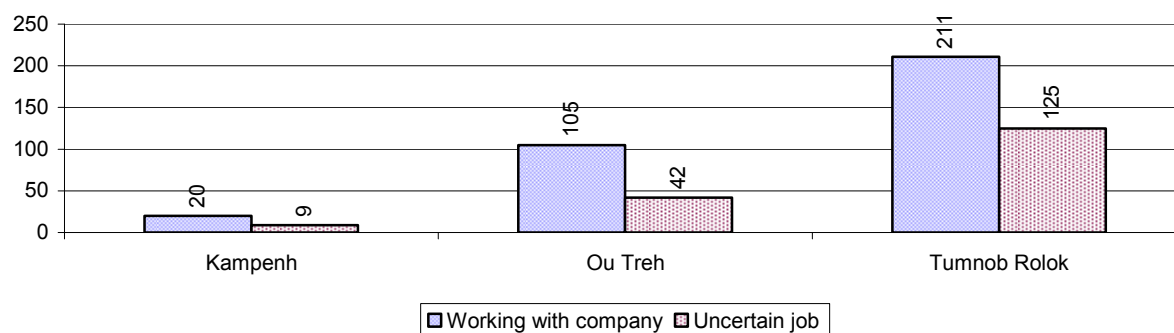
Description	2006	2007	2008
Number of families permanently in-migrated	35 families	70 families	37 families
Total number of people	140 person(s)	264 person(s)	128 person(s)
Total number of female	64 person(s)	117 person(s)	62 person(s)
Number of families permanently out-migrated	93 families	135 families	75 families
Total number of people	388 person(s)	640 person(s)	465 person(s)
Total number of female	205 person(s)	316 person(s)	212 person(s)
Number of families staying temporarily	105 families	91 families	79 families
Total number of people	353 person(s)	365 person(s)	340 person(s)
Total number of female	149 person(s)	180 person(s)	152 person(s)

3.5.2 Job Migration

Description	2006	2007	2008
Number of people migrated to work with company/factory	4%	3%	4%
Number of people migrated to work, but have uncertain jobs	3%	1%	2%

Note: Calculated as a percentage of the total population of 18-60 year olds

3.5.3 Number of People working outside their home Villages in a Company/Factory or with an uncertain Job in 2008

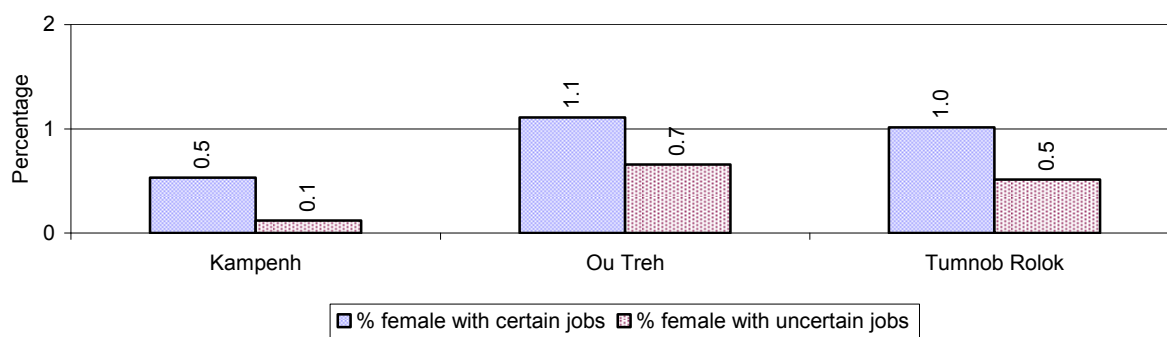


3.5.4 Female migration over 3 years

Description	2006 %	2007 %	2008	
			%	Number
Total number of migrants	4.0%	2.4%	3.4%	512 person(s)
Number of female migrants	1.8%	1.1%	1.5%	225 person(s)
Total number of migrants, who go to work with company/factory (with certain jobs)	2.3%	1.6%	2.2%	336 person(s)
Number of female migrants with certain jobs	1.1%	0.8%	1.0%	149 person(s)
Total number of migrants with uncertain jobs	1.7%	0.8%	1.2%	176 person(s)
Number of female migrants with uncertain jobs	0.7%	0.3%	0.5%	76 person(s)

Note: Calculated as a percentage of the total population

3.5.5 Percentage female Migrants with certain and uncertain Jobs, by Commune, in 2008



Note: Calculated as a percentage of the total population of the commune

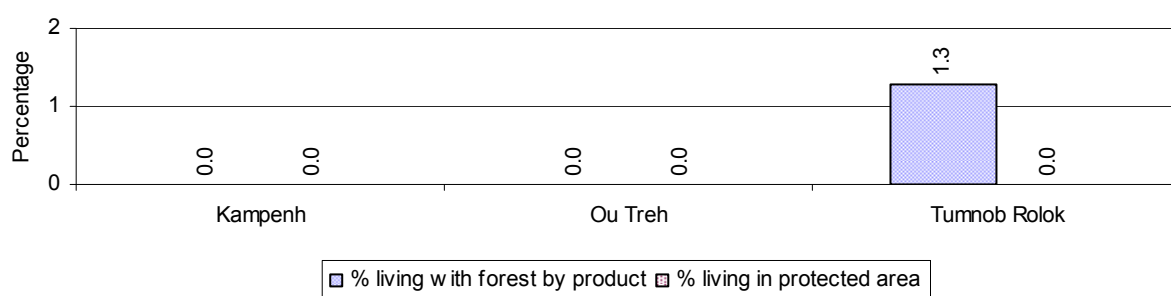
4 Natural Resources and Environment (NRE)

4.1 Families involved with NRE issues over 3 years

Description	2006 %	2007 %	2008	
			%	Number
Families living with forest by products	2 %	1 %	1 %	26 families
Families living in a protected area	4 %	0 %	0 %	0 families
Houses with access to garbage collection service	0 %	0 %	1 %	31 families
Families affected by environmental pollution	6 %	9 %	1 %	19 families
Families using chemical fertilizer	1 %	1 %	2 %	59 families
Families using chemical pesticide	2 %	2 %	3 %	79 families

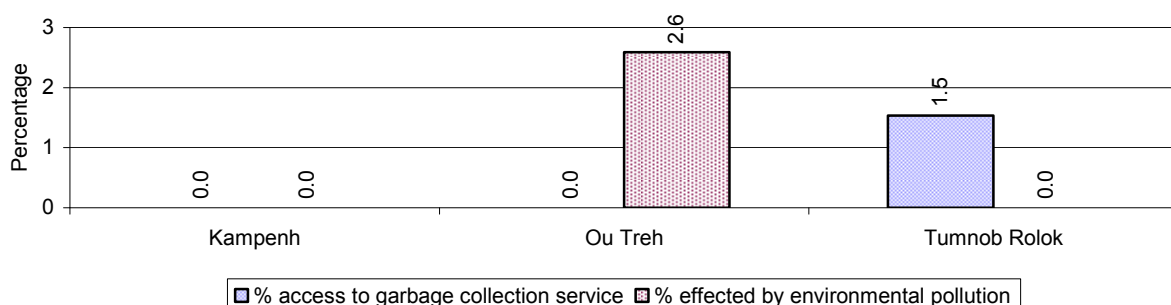
Note: Calculated as a percentage of the total number of families

4.2 Percentage of Families involved with Natural Resource issues, by Commune, for 2008



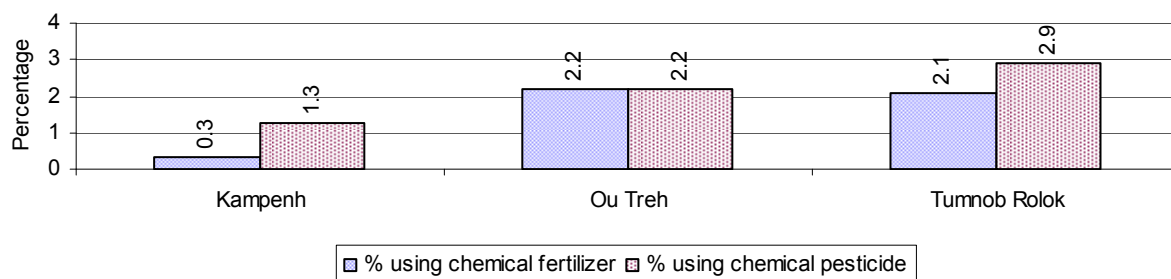
Note: Calculated as a percentage of the number of families in each commune

4.3 Percentage Houses with access to Garbage collection and Families affected by environmental Pollution, by Commune, for 2008



Note: Garbage collection is calculated as a percentage of the total number of houses in each commune and families affected by environmental pollution is calculated as a percentage of the total number of families in each commune.

4.4 Percentage Families using chemical Fertilizer and chemical Pesticides, by Commune, for 2008



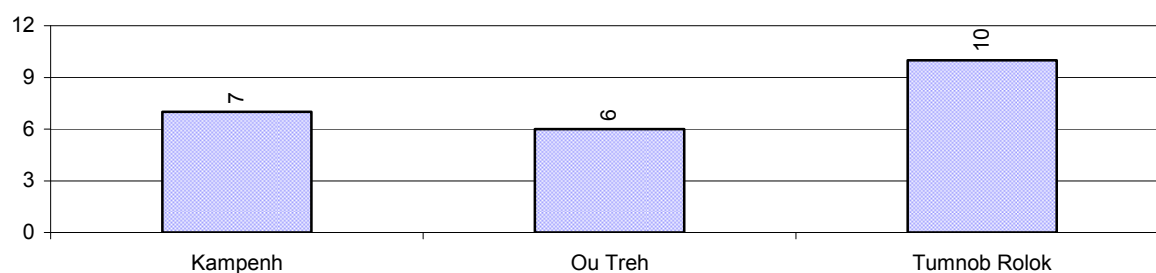
Note: Calculated as a percentage of the total number of families in each commune

5 Administration and Security

5.1 Birth Registration across 3 years

Description	2006	2007	2008
Number of infants to be registered	170 person(s)	221 person(s)	276 person(s)
Number of unregistered infants the year	76 person(s)	54 person(s)	23 person(s)
Percentage of infants unregistered	45 %	24 %	8 %

5.2 Number of unregistered Infants born in 2008, by Commune

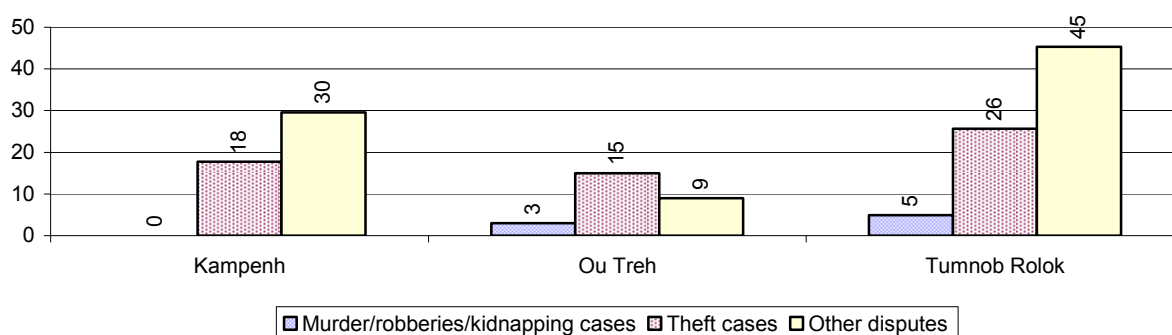


5.3 Registered criminal Cases over 3 years

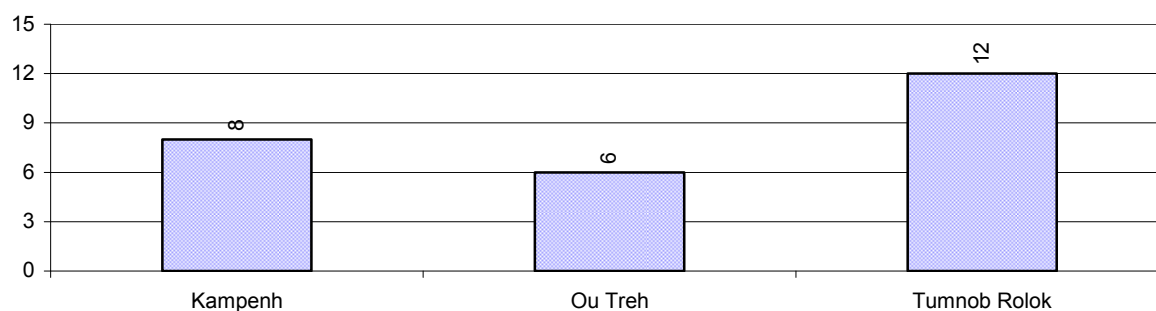
Description	2006	2007	2008
Murders, robberies and kidnapping cases	2 case(s)	3 case(s)	6 case(s)
Theft cases	78 case(s)	47 case(s)	34 case(s)
land dispute cases	37 case(s)	29 case(s)	26 case(s)
Other disputes cases	68 case(s)	49 case(s)	54 case(s)

Note: this reflects only registered criminal cases

5.4 Registered criminal Cases per 10,000 people, by Commune, for 2008



5.5 Number of registered Land Disputes, by Commune, in 2008

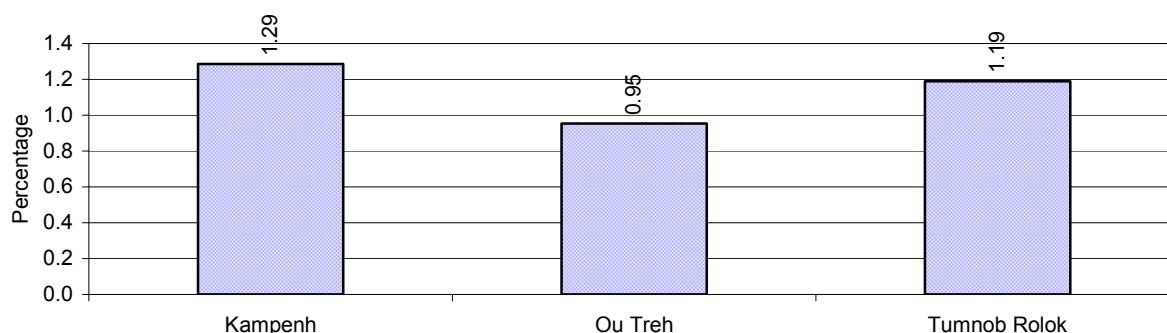


6 Gender

6.1 Registered Domestic Violence over 3 years

Description		2006	2007	2008
Families experiencing domestic violence		79 families	74 families	35 families(s)
% families experiencing domestic violence		2 %	2 %	1 %
Domestic violence cases reported by village chiefs		19 case(s)	43 case(s)	21 case(s)
Type	Physical violence	11 case(s)	9 case(s)	9 case(s)
	Sexual violence	0 case(s)	1 case(s)	0 case(s)
	Mental violence	5 case(s)	31 case(s)	12 case(s)
	Household economic violence	3 case(s)	2 case(s)	0 case(s)
Number of administrative decisions on domestic violence		0 case(s)	10 case(s)	0 case(s)
% of administrative decisions on domestic violence		0 %	23 %	0 %

6.2 Percentage of registered cases of Families experiencing domestic Violence, by Commune, in 2008



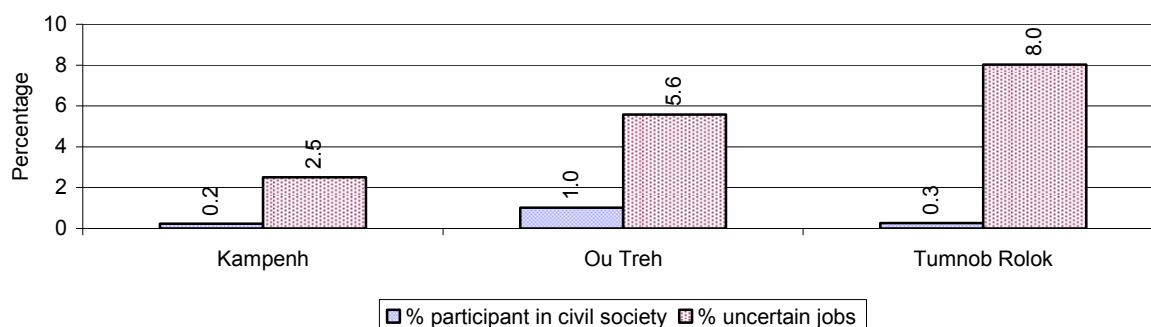
Note: Calculated as a percentage of the total number of families in each commune

6.3 Women's involvement over 3 years

Description	2006 %	2007 %	2008	
			%	Number
People participating in civil society	1%	1%	1%	136 person(s)
Women participating in civil society	0%	0%	0%	65 person(s)
People, 18-60 yrs, with uncertain/irregular jobs	16%	4%	14%	1,137 person(s)
Women, 18-60 yrs, with uncertain/irregular jobs	8%	1%	7%	583 person(s)

Note: Participation can be in NGOs, CBOs, credit groups, women's unions, parties and other civil society organizations. The first section is calculated as a percentage of the total population. The second section is calculated as a percentage of the total 18-60 year old population.

6.4 Percentage of Female Participants in Civil Society and of 18-60 year women with uncertain Jobs, by Commune, in 2008



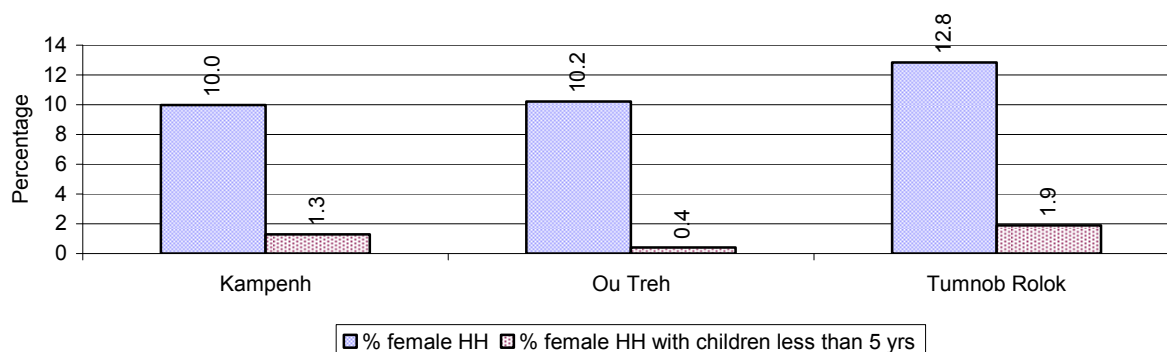
Note: Percentage of female participants in civil society is calculated as a percentage of the total population per commune. The percentage of 18-60 years old women with uncertain jobs is calculated as a percentage of the total 18-60 year old population per commune.

6.5 Female-headed Households over 3 years

Families with:	2006	2007	2008	
	%	%	%	Number
Households in which a woman is the family head	16%	14%	12%	365 families
Households in which a woman is the family head with children of less than 5 yrs	4%	1%	1%	45 families

Note: Calculated as a percentage of the total number of families

6.6 Percentage female-headed Households and with Children of less than 5 years old, by Commune, in 2008



Note: Calculated as a percentage of the total number of families in each commune
HH: Headed Household

7 Indigenous People in the District

7.1 Ethnic Minorities in the District over 3 years

Race of indigenous	2006		2007		2008	
	# families	# population	# families	# population	# families	# population
Phnong	0 families	0 person(s)	0 families	0 person(s)	0 families	0 person(s)
Kouy	0 families	0 person(s)	0 families	0 person(s)	0 families	0 person(s)
Stieng	0 families	0 person(s)	0 families	0 person(s)	0 families	0 person(s)
Mil	0 families	0 person(s)	0 families	0 person(s)	0 families	0 person(s)
Kroal	0 families	0 person(s)	0 families	0 person(s)	0 families	0 person(s)
Thmorn	0 families	0 person(s)	0 families	0 person(s)	0 families	0 person(s)
Khaonh	0 families	0 person(s)	0 families	0 person(s)	0 families	0 person(s)
Tompouonn	0 families	0 person(s)	0 families	0 person(s)	0 families	0 person(s)
Charay	0 families	0 person(s)	0 families	0 person(s)	0 families	0 person(s)
Kroeung	0 families	0 person(s)	0 families	0 person(s)	0 families	0 person(s)
Kavet	0 families	0 person(s)	0 families	0 person(s)	0 families	0 person(s)
Saouch	0 families	0 person(s)	0 families	0 person(s)	0 families	0 person(s)
Lun	0 families	0 person(s)	0 families	0 person(s)	0 families	0 person(s)
Kachak	0 families	0 person(s)	0 families	0 person(s)	0 families	0 person(s)
Praov	0 families	0 person(s)	0 families	0 person(s)	0 families	0 person(s)
Others	0 families	0 person(s)	0 families	0 person(s)	0 families	0 person(s)
Total	0 families	0 person(s)	0 families	0 person(s)	0 families	0 person(s)

Note: "Others" refer to other ethnic groups which are not listed.

7.2 Other Minorities in the District over 3 years

Minority	2006		2007		2008	
	# families	# population	# families	# population	# families	# population
Khmer Islamic	4 families	17 person(s)	2 families	8 person(s)	4 families	23 person(s)
Vietnamese	10 families	39 person(s)	13 families	53 person(s)	12 families	50 person(s)
Laos	0 families	0 person(s)	0 families	0 person(s)	0 families	0 person(s)

Note: Number of indigenous and minority population are additional data, so some village may not recorded.

SECTION C: PLANS AND PROJECTS

8 Priorities and Plans

8.1 Priorities of Commune Councils for 2009 in the District by Sector

The District Priority Activity Matrix (DPAM) data are taken from the CDPD. The DPAM is used for the District Integration Workshop (DIW), to show what kind of projects the commune has proposed in their Commune Investment Plan (CIP) for 2009. Donors, departments and other agencies then consider which projects they want to support and which projects they are not interested in. This results in Temporary Agreements between the Commune Council and the Supporter (NGO, Department, private donor, etc), as shown in table 8.2

No.	Project Name	Kampenh	Ou Treh	Tumnob Rolok	Req.Project
		180301	180302	180303	Total
Economic					
1	Hybrid technique training	2 training			1
2	E.M technique training	2 training			1
3	Animal vaccination request	1 time	2 time	2 time	3
4	Village veterinary training	2 training			1
5	Animal raising training			2 training	1
6	Chicken raising training		2 training		1
7	Calf for raising request		10 Head		1
8	Sow for raising request	50 Head	20 Head		2
9	Fish raising training	2 training			1
10	Road maintenance project	3000 m	1000 m	1000 m	3
11	Laterite/natural gravel road construction	1800 m		2000 m	2
12	Culvert construction			5 place	1
13	Bridger construction			1 place	1
14	Asphalt road construction	220 m	350 m	950 m	3
15	Mass concrete road construction	2000 m	1000 m	700 m	3
16	Culvert repairing	8 place	8 place		2
17	Spillway repairing		1 place	1 place	2
18	Cash credit	4 time			1
19	Development of natural tourism area			1 Team	1
20	Electricity supply	2000 m	7000 m	4000 m	3
Social					
1	Family planning	12 time		12 time	2
2	HIV/AIDS awareness education	10 time	6 time	12 time	3
3	HIV/AIDS infected person assistance	12 time		12 time	2

District Data Book 2009: Development Plans and Projects

No.	Project Name	Kampenh	Ou Treh	Tumnob Rolok	Req.Project
		180301	180302	180303	Total
4	Food safety and hygiene education	10 time	2 time	2 time	3
5	Maternal health education	10 time		12 time	2
6	Children immunization provision	12 time	12 time	12 time	3
7	Health clinic service	360 day			1
8	TB/leprosy patients searching	5 time		12 time	2
9	Malaria awareness education		12 time	12 time	2
10	Dengue fever education programme	12 time	12 time	12 time	3
11	Health subsidiary fund for the poor	12 time	12 time		2
12	Maternal health care service activation/creation		12 time		1
13	Nutrition support	10 time	12 time	4 time	3
14	Latrine construction	50 toilet	15 toilet	40 toilet	3
15	Latrine construction at school	2 toilet		4 toilet	2
16	Latrine use education			1 time	1
17	Water supply			1 place	1
18	Pump wells construction			5 well	1
19	School building/furniture			1 set	1
20	School office construction	1 building	1 building	1 building	3
21	School garden	1 place		1 place	2
22	School building	2 building	2 building	1 building	3
23	Motivating pupil's parents for school enrollment	10 time	2 time	2 time	3
24	Teacher/volunteer teacher need	2 person			1
25	School materials support to poor pupils	5 time	2 time	2 time	3
26	Engine/car repairing skill training			1 training	1
27	Agricultural products processing/craft technique			1 training	1
28	Electric equipment repair skill training	2 training	2 training	1 training	3
29	Widows family assistance/support		2 time	10 time	2
NREM					
1	Fishery law education	5 time	2 time	2 time	3
2	Education on importance of the forests	5 time	2 time	2 time	3
3	Environmental poster installation	1 board	1 board	1 board	3
4	NREM education campaign	5 time	3 time	2 time	3
5	Flooded forest rehabilitation/planting	10000 Tree	1000 Tree	6000 Tree	3
6	Illegal fishing prevention	12 time	12 time	12 time	3

District Data Book 2009: Development Plans and Projects

No.	Project Name	Kampenh	Ou Treh	Tumnob Rolok	Req.Project
		180301	180302	180303	Total
7	Strengthening fishery community	1 Fishing Community	1 Fishing Community	1 Fishing Community	3
8	Fish habitat/fish species protection/conservation	30 piece	250 piece	150 piece	3
9	Fish raising community support	1 Fishing Community	1 Fishing Community	1 Fishing Community	3
10	Fishing boundary identification			1 time	1
11	Forest protection strengthening		12 time		1
12	Drainage system rehabilitation	4000 m	800 m		2
13	Sewage culvert system construction/rehabilitation		2800 m		1
14	Solving rubbish problems	24 time	4 time		2
15	Waste dumping creation/improvement	1 place	1 place	1 place	3
16	Waste collection service creation/improvement	1 Team	1 Team	1 Team	3
17	New sewage system construction			1000 m	1
18	Biogas cooking project	6 time	4 time	2 time	3
19	Waste control measurement	1 place	1 place		2
Administration and Security					
1	Commune office construction/renovation	1 building	1 building	1 building	3
2	Village office construction/renovation		2 building		1
3	Commune office furniture			1 set	1
4	Provision of land titles/certificates	250 doc		500 doc	2
5	Land use planning	1 time	4 time		2
6	Dwelling numbering	315 house	500 house	1340 house	3
7	Drug and related law education	12 time		12 time	2
8	Local security strengthening	12 time			1
9	Gambling control/elimination activation		12 time	12 time	2
10	Gangs gathering educated for local security		12 time		1
11	Drug business/use prevention	12 time	4 time		2
12	Ammunition and weapons law education		3 time		1
13	Local police capacity building/strengthening	2 time	2 time		2
14	Family/temporary dweller record book provision	4 time	12 time	4 time	3
15	Identification card issued	2 time		4 time	2
16	Wedding/family law dissemination		4 time		1
17	Women association formation/support	5 Team			1
18	Local community establishment/strengthening		1 Team	2 Team	2

District Data Book 2009: Development Plans and Projects

No.	Project Name	Kampenh	Ou Treh	Tumnob Rolok	Req.Project
		180301	180302	180303	Total
Gender					
1	Women role in development strengthening/dissemination	4 time	4 time	4 time	3
2	Gender concept/equity mainstreaming	4 training	4 training	4 training	3
3	Woman and children's rights dissemination	6 time		4 time	2
4	Law against domestic violence dissemination	4 time	4 time	6 time	3
5	Law against trafficking dissemination	8 time			1
6	Children's labor exploitation elimination	5 time		12 time	2

Source: CDPD – District Priority Matrix

8.2 Temporary Agreements by Commune, for 2009²

At the District Integration Workshop (DIW) the Supporters (donors, agencies, private donors, NGOs, etc.) identify which projects/activities they would like to support or they put forward their own projects to be implemented in a particular commune. Once there is agreement between Commune Councils and Supporters on specific projects a **Temporary Agreement** is signed by the commune and the Supporter to show their mutual commitment to the identified projects/activities.

It is important to keep in mind that such Temporary Agreements do not necessarily result in implementation.

8.2.1 Temporary Agreements for 2009 as per DIW 2008 for Commune: Kampenh

Commune GIS	Commune	Temporary Agreements				Supporter	Funding Source	Listed in CIP befor DIW
		Project Name	Quantity	Unit	Est.Cost (K.Riels)			
Economic								
180301	Kampenh	ty	1	place	8000			<input type="checkbox"/>
180301	Kampenh	Electricity supply	2000	m	20000			✓
180301	Kampenh	E.M technique training	1	Course/year	500	Department of Agriculture Forestry and Fisheries	PIF	✓
180301	Kampenh	Livestock vaccination provision	2	time	800	Department of Agriculture Forestry and Fisheries	PIF	✓
180301	Kampenh	Cash credit	4	time	100000	American Friends Service Committee		✓
180301	Kampenh	vcb	1	Team	8000	American Friends Service Committee		<input type="checkbox"/>
Social								
180301	Kampenh	Transmitted disease education and prevention	12	time	3200	Department of Health		<input type="checkbox"/>
180301	Kampenh	HIV/AIDS infected person assistance	12	time	1800	Department of Health		✓
180301	Kampenh	Antenatal care service accessibility improvement	12	time	3000	Department of Health		<input type="checkbox"/>
180301	Kampenh	Reproductive health awareness education	2	time	400	Department of Health		<input type="checkbox"/>
180301	Kampenh	Reproductive health awareness education	6	time	800	Reproductive Health Association of Cambodia		<input type="checkbox"/>

² Not all the data from the CDPD has been translated to English, this has resulted in some cells in the TA tables being blank.

District Data Book 2009: Development Plans and Projects

Commune GIS	Commune	Temporary Agreements				Supporter	Funding Source	Listed in CIP before DIW
		Project Name	Quantity	Unit	Est.Cost (K.Riels)			
180301	Kampenh	Women immunization	4	time	4000	Department of Health		<input type="checkbox"/>
180301	Kampenh	TB/leprosy patients searching	12	time	2400	Department of Health		✓
180301	Kampenh	Women and children health care education	4	time	1300	Department of Health		<input type="checkbox"/>
180301	Kampenh	Dengue fever education programme	4	time	2000	Department of Health		✓
180301	Kampenh	Nutrition support	4	time	2000	Department of Health		✓
180301	Kampenh	Nutrition support	2	time	2000	Reproductive Health Association of Cambodia		✓
180301	Kampenh	HIV/AIDS awareness education	12	Course/year	1800	Department of Health		✓
180301	Kampenh	HIV/AIDS awareness education	2	time	400	Reproductive Health Association of Cambodia		✓
180301	Kampenh	Maternal health education	12	time	2000	Department of Health		✓
180301	Kampenh	Health clinic service	24	time	2000	Department of Health		✓
180301	Kampenh	Food safety and hygiene education	4	time	1600	Department of Health		✓
180301	Kampenh	Family planning	12	time	4000	Department of Health		✓
180301	Kampenh	Antenatal care service accessibility improvement	12	time	2000	Reproductive Health Association of Cambodia		<input type="checkbox"/>
180301	Kampenh	Antenatal vaccination provision	12	time	1000	Department of Health		<input type="checkbox"/>
180301	Kampenh	Children immunization provision	4	time	2400	Reproductive Health Association of Cambodia		✓
180301	Kampenh	Family planning	12	time	3000	Reproductive Health Association of Cambodia		✓
180301	Kampenh	kl	12	time	1000	Department of Health		<input type="checkbox"/>
180301	Kampenh	Sexual disease treatment needs	12	time	300	Reproductive Health Association of Cambodia		<input type="checkbox"/>
180301	Kampenh	HIV/AIDS health care program	12	time	1800	Reproductive Health Association of Cambodia		<input type="checkbox"/>
180301	Kampenh		40	person	7500	Reproductive Health Association of Cambodia		<input type="checkbox"/>
180301	Kampenh	Health/hygiene education for local people	12	time	2800	Department of Health		<input type="checkbox"/>
180301	Kampenh	lk	12	time	2800	Department of Health		<input type="checkbox"/>
180301	Kampenh	Mosquito larvae removal treatment	2	time	1000	Department of Health		<input type="checkbox"/>

District Data Book 2009: Development Plans and Projects

Commune GIS	Commune	Temporary Agreements				Supporter	Funding Source	Listed in CIP before DIW
		Project Name	Quantity	Unit	Est.Cost (K.Riels)			
180301	Kamphenh	Children immunization provision	4	time	2400	Department of Health		✓
NREM								
180301	Kamphenh	Fishery law education	2	time	800	American Friends Service Committee		✓
180301	Kamphenh	Strengthening fishery community	1	Fishing Community	3000	American Friends Service Committee		✓
Administration and Security								
180301	Kamphenh	Gambling conquest reinforcement	12	time	2400	Police Commissioner's Office		□
180301	Kamphenh	Drug and related law education	12	time	1200	Police Commissioner's Office		✓
180301	Kamphenh	pr	1	time	800	Cambodian Human Rights Association		□
180301	Kamphenh	Local police capacity building/strengthening	2	time	1000	Police Commissioner's Office		✓
180301	Kamphenh	Drug and related law education	1	time	240	Department of Social and Veteran Affairs and Youth Rehabilitation		✓
180301	Kamphenh	Drug business/use prevention	12	time	2400	Police Commissioner's Office		✓
180301	Kamphenh	Local security strengthening	0	time	0	Police Commissioner's Office		✓
180301	Kamphenh	Identification card issued	2	time	3000	Police Commissioner's Office		✓
180301	Kamphenh	TV/Radio broadcasting of local news	1	time	240	Department of Information	PIF	□
180301	Kamphenh	Land law dissemination	1	time	800	Cambodian League for the Promotion and Defense of H.R		□
180301	Kamphenh	Gangs gathering educated for local security	12	time	2400	Police Commissioner's Office		□
180301	Kamphenh	Human right and related law education	2	time	1200	Cambodian League for the Promotion and Defense of H.R		□
Gender								
180301	Kamphenh	Law against domestic violence dissemination	1	time	240	Department of Women	PIF	✓
180301	Kamphenh	Law against domestic violence dissemination	2	time	400	BAICE		✓

District Data Book 2009: Development Plans and Projects

Commune GIS	Commune	Temporary Agreements				Supporter	Funding Source	Listed in CIP befor DIW
		Project Name	Quantity	Unit	Est.Cost (K.Riels)			
180301	Kampenh	Gender concept/equity mainstreaming	1	Course/year	240	Department of Women	PIF	✓
180301	Kampenh	Women role in development strengthening/dissemination	1	time	240	Department of Women	PIF	✓
180301	Kampenh	Woman and children's rights dissemination	1	time	240	Department of Women	PIF	✓
180301	Kampenh	Woman and children's rights dissemination	2	time	1000	BAICE		✓
180301	Kampenh	Children's labor exploitation elimination	2	time	2000	BAICE		✓
180301	Kampenh	Protection network for women and children dissemination	4	time	1000	BAICE		□
180301	Kampenh	Law against trafficking dissemination	1	time	240	Department of Social and Veteran Affairs and Youth Rehabilitation	PIF	✓
180301	Kampenh	Anti-trafficking of women and children law dissemination	1	time	240	Department of Women	PIF	✓
180301	Kampenh	Law against trafficking dissemination	1	time	400	Department of Labor and Vocational Training		✓
180301	Kampenh	Anti-trafficking of women and children law dissemination	2	time	400	BAICE		✓
180301	Kampenh	Anti-trafficking of women and children law dissemination	2	time	400	Cambodian League for the Promotion and Defense of H.R		✓
180301	Kampenh	Children's labor exploitation elimination	1	time	1000	Department of Labor and Vocational Training		✓

8.2.2 Temporary Agreements for 2009 as per DIW 2008 for Commune: Ou Treh

Commune GIS	Commune	Temporary Agreements				Supporter	Funding Source	Listed in CIP before DIW
		Project Name	Quantity	Unit	Est.Cost (K.Riels)			
Economic								
180302	Ou Treh	E.M technique training	1	Course/year	500	Department of Agriculture Forestry and Fisheries	PIF	<input type="checkbox"/>
180302	Ou Treh	Livestock vaccination provision	2	time	800	Department of Agriculture Forestry and Fisheries	PIF	✓
180302	Ou Treh	vcb	1	Team	8000	American Friends Service Committee		<input type="checkbox"/>
180302	Ou Treh	Cash credit	4	time	100000	American Friends Service Committee		<input type="checkbox"/>
180302	Ou Treh	Electricity supply	8000	m	80000			✓
180302	Ou Treh	Chicken raising training	1	Course/year	1000	Department of Agriculture Forestry and Fisheries	PIF	✓
180302	Ou Treh	ty	1	place	8000			<input type="checkbox"/>
Social								
180302	Ou Treh	Antenatal vaccination provision	12	time	1000	Department of Health		<input type="checkbox"/>
180302	Ou Treh	Women immunization	4	time	4000	Department of Health		<input type="checkbox"/>
180302	Ou Treh	Transmitted disease education and prevention	12	time	3200	Department of Health		<input type="checkbox"/>
180302	Ou Treh	Antenatal care service accessibility improvement	12	time	3000	Department of Health		<input type="checkbox"/>
180302	Ou Treh	Reproductive health awareness education	2	time	400	Department of Health		<input type="checkbox"/>
180302	Ou Treh	Reproductive health awareness education	6	time	800	Reproductive Health Association of Cambodia		<input type="checkbox"/>
180302	Ou Treh	Family planning	12	time	3000	Reproductive Health Association of Cambodia		<input type="checkbox"/>
180302	Ou Treh	Health clinic service	24	time	3000	Department of Health		<input type="checkbox"/>
180302	Ou Treh	Children immunization provision	4	time	2400	Reproductive Health Association of Cambodia		✓
180302	Ou Treh	Children immunization provision	4	time	2400	Department of Health		✓
180302	Ou Treh	Women and children health care	6	time	2000	Department of Health		<input type="checkbox"/>

District Data Book 2009: Development Plans and Projects

Commune GIS	Commune	Temporary Agreements				Supporter	Funding Source	Listed in CIP before DIW
		Project Name	Quantity	Unit	Est.Cost (K.Riels)			
		education						
180302	Ou Treh	Nutrition support	2	time	2000	Reproductive Health Association of Cambodia		✓
180302	Ou Treh	Nutrition support	4	time	2000	Department of Health		✓
180302	Ou Treh	Dengue fever education programme	4	time	2000	Department of Health		✓
180302	Ou Treh	HIV/AIDS awareness education	2	time	400	Reproductive Health Association of Cambodia		✓
180302	Ou Treh	HIV/AIDS awareness education	12	Course/year	1800	Department of Health		✓
180302	Ou Treh	Food safety and hygiene education	4	time	1600	Department of Health		✓
180302	Ou Treh	Family planning	12	time	4000	Department of Health		□
180302	Ou Treh	kl	12	time	1200	Department of Health		□
180302	Ou Treh	Antenatal care service accessibility improvement	12	time	2000	Reproductive Health Association of Cambodia		□
180302	Ou Treh	Mosquito larvae removal treatment	2	time	1000	Department of Health		□
180302	Ou Treh	Maternal health education	12	time	2000	Department of Health		□
180302	Ou Treh	Sexual disease treatment needs	12	time	400	Reproductive Health Association of Cambodia		□
180302	Ou Treh	HIV/AIDS infected person assistance	12	time	2000	Department of Health		□
180302	Ou Treh	HIV/AIDS health care program	12	time	2000	Reproductive Health Association of Cambodia		□
180302	Ou Treh		50	person	7500	Reproductive Health Association of Cambodia		□
180302	Ou Treh	Health/hygiene education for local people	12	time	2800	Department of Health		□
180302	Ou Treh	Literacy class	1	class	2000	BAICE		□
180302	Ou Treh	lk	12	time	2800	Department of Health		□
180302	Ou Treh	TB/leprosy patients searching	12	time	2400	Department of Health		□
NREM								
180302	Ou Treh	NREM education campaign	1	time	400	Department of Environment	PIF	✓
180302	Ou Treh	Fishery law education	2	time	800	American Friends Service Committee		✓
180302	Ou Treh	Strengthening fishery community	1	Fishing Community	3000	American Friends Service Committee		✓
Administration and Security								

District Data Book 2009: Development Plans and Projects

Commune GIS	Commune	Temporary Agreements				Supporter	Funding Source	Listed in CIP before DIW
		Project Name	Quantity	Unit	Est.Cost (K.Riels)			
180302	Ou Treh	Gambling conquest reinforcement	12	time	2400	Police Commissioner's Office		✓
180302	Ou Treh	TV/Radio broadcasting of local news	1	time	240	Department of Information	PIF	□
180302	Ou Treh	Land law dissemination	1	time	800	Cambodian League for the Promotion and Defense of H.R		□
180302	Ou Treh	Human right and related law education	2	time	1200	Cambodian League for the Promotion and Defense of H.R		□
180302	Ou Treh	Identification card issued	2	time	3000	Police Commissioner's Office		□
180302	Ou Treh	pr	1	time	800	Cambodian Human Rights Association		□
180302	Ou Treh	Gangs gathering educated for local security	12	time	2400	Police Commissioner's Office		✓
180302	Ou Treh	Local police capacity building/strengthening	2	time	1000	Police Commissioner's Office		✓
180302	Ou Treh	Drug business/use prevention	12	time	2400	Police Commissioner's Office		□
180302	Ou Treh	Drug and related law education	12	time	1200	Police Commissioner's Office		□
Gender								
180302	Ou Treh	Gender concept/equity mainstreaming	1	Course/year	240	Department of Women	PIF	✓
180302	Ou Treh	Law against domestic violence dissemination	1	time	240	Department of Women	PIF	✓
180302	Ou Treh	Law against domestic violence dissemination	2	time	400	BAICE		✓
180302	Ou Treh	Anti-trafficking of women and children law dissemination	1	time	240	Department of Women	PIF	□
180302	Ou Treh	Anti-trafficking of women and children law dissemination	2	time	400	BAICE		□
180302	Ou Treh	Anti-trafficking of women and children law dissemination	2	time	400	Cambodian League for the Promotion and Defense of		□

Commune GIS	Commune	Temporary Agreements				Supporter	Funding Source	Listed in CIP before DIW
		Project Name	Quantity	Unit	Est.Cost (K.Riels)			
						H.R		
180302	Ou Treh	Protection network for women and children dissemination	4	time	1000	BAICE		<input type="checkbox"/>
180302	Ou Treh	Woman and children's rights dissemination	2	time	1000	BAICE		<input type="checkbox"/>
180302	Ou Treh	Women role in development strengthening/dissemination	1	time	240	Department of Women	PIF	✓

8.2.3 Temporary Agreements for 2009 as per DIW 2008 for Commune: Tumnob Rolok

Commune GIS	Commune	Temporary Agreements				Supporter	Funding Source	Listed in CIP befor DIW
		Project Name	Quantity	Unit	Est.Cost (K.Riels)			
Economic								
180303	Tumnob Rolok	E.M technique training	1	Course/year	500	Department of Agriculture Forestry and Fisheries	PIF	<input type="checkbox"/>
180303	Tumnob Rolok	Cash credit	4	time	100000	American Friends Service Committee		<input type="checkbox"/>
180303	Tumnob Rolok	vcb	1	Team	8000	American Friends Service Committee		<input type="checkbox"/>
180303	Tumnob Rolok	ty	2	place	10000			<input type="checkbox"/>
180303	Tumnob Rolok	Electricity supply	5000	m	50000			✓
180303	Tumnob Rolok	Livestock vaccination provision	2	time	800	Department of Agriculture Forestry and Fisheries	PIF	✓
180303	Tumnob Rolok	Animal raising training	1	Course/year	600	Department of Agriculture Forestry and Fisheries	PIF	✓
Social								
180303	Tumnob Rolok	Family planning	12	time	3000	Reproductive Health Association of Cambodia		✓
180303	Tumnob Rolok	sc	1	place	20000	BAICE		<input type="checkbox"/>

District Data Book 2009: Development Plans and Projects

Commune GIS	Commune	Temporary Agreements				Supporter	Funding Source	Listed in CIP before DIW
		Project Name	Quantity	Unit	Est.Cost (K.Riels)			
180303	Tumnob Rolok	Children immunization provision	4	time	2400	Reproductive Health Association of Cambodia		✓
180303	Tumnob Rolok		50	person	7500	Reproductive Health Association of Cambodia		□
180303	Tumnob Rolok	Women and children health care education	6	time	2000	Department of Health		□
180303	Tumnob Rolok	Women immunization	4	time	4000	Department of Health		□
180303	Tumnob Rolok	Food safety and hygiene education	4	time	1600	Department of Health		✓
180303	Tumnob Rolok	Health clinic service	24	time	3000	Department of Health		□
180303	Tumnob Rolok	Family planning	12	time	4000	Department of Health		✓
180303	Tumnob Rolok	Mosquito larvae removal treatment	2	time	1000	Department of Health		□
180303	Tumnob Rolok	lk	12	time	2800	Department of Health		□
180303	Tumnob Rolok	Health/hygiene education for local people	12	time	2800	Department of Health		□
180303	Tumnob Rolok	kl	12	time	1200	Department of Health		□
180303	Tumnob Rolok	Sexual disease treatment needs	12	time	400	Reproductive Health Association of Cambodia		□
180303	Tumnob Rolok	HIV/AIDS health care program	12	time	2000	Reproductive Health Association of Cambodia		□
180303	Tumnob Rolok	Antenatal vaccination provision	12	time	1000	Department of Health		□
180303	Tumnob Rolok	Reproductive health awareness education	6	time	800	Reproductive Health Association of Cambodia		□
180303	Tumnob Rolok	Dengue fever education programme	4	time	2000	Department of Health		✓
180303	Tumnob Rolok	HIV/AIDS awareness education	12	Course/year	1800	Department of Health		✓

District Data Book 2009: Development Plans and Projects

Commune GIS	Commune	Temporary Agreements				Supporter	Funding Source	Listed in CIP before DIW
		Project Name	Quantity	Unit	Est.Cost (K.Riels)			
180303	Tumnob Rolok	HIV/AIDS awareness education	2	time	400	Reproductive Health Association of Cambodia		✓
180303	Tumnob Rolok	Maternal health education	12	time	2000	Department of Health		✓
180303	Tumnob Rolok	HIV/AIDS infected person assistance	12	time	2000	Department of Health		✓
180303	Tumnob Rolok	Nutrition support	4	time	2000	Department of Health		✓
180303	Tumnob Rolok	Nutrition support	2	time	2000	Reproductive Health Association of Cambodia		✓
180303	Tumnob Rolok	Transmitted disease education and prevention	12	time	3200	Department of Health		□
180303	Tumnob Rolok	Antenatal care service accessibility improvement	12	time	2000	Reproductive Health Association of Cambodia		□
180303	Tumnob Rolok	Children immunization provision	4	time	2400	Department of Health		✓
180303	Tumnob Rolok	Antenatal care service accessibility improvement	12	time	3000	Department of Health		□
180303	Tumnob Rolok	Reproductive health awareness education	3	time	800	Department of Health		□
180303	Tumnob Rolok	TB/leprosy patients searching	12	time	2400	Department of Health		✓
NREM								
180303	Tumnob Rolok	Strengthening fishery community	1	Fishing Community	3000	American Friends Service Committee		✓
180303	Tumnob Rolok	Fishery law education	2	time	800	American Friends Service Committee		✓
180303	Tumnob Rolok	NREM education campaign	1	time	400	Department of Environment	PIF	✓
Administration and Security								
180303	Tumnob Rolok	Drug business/use prevention	12	time	2400	Police Commissioner's Office		□
180303	Tumnob Rolok	Drug and related law education	1	time	240	Department of Social and Veteran Affairs and		✓

District Data Book 2009: Development Plans and Projects

Commune GIS	Commune	Temporary Agreements				Supporter	Funding Source	Listed in CIP before DIW
		Project Name	Quantity	Unit	Est.Cost (K.Riels)			
						Youth Rehabilitation		
180303	Tumnob Rolok	Gangs gathering educated for local security	12	time	2400	Police Commissioner's Office		<input type="checkbox"/>
180303	Tumnob Rolok	Local police capacity building/strengthening	2	time	1000	Police Commissioner's Office		<input type="checkbox"/>
180303	Tumnob Rolok	Human right and related law education	2	time	1200	Cambodian League for the Promotion and Defense of H.R		<input type="checkbox"/>
180303	Tumnob Rolok	Land law dissemination	1	time	800	Cambodian League for the Promotion and Defense of H.R		<input type="checkbox"/>
180303	Tumnob Rolok	TV/Radio broadcasting of local news	1	time	240	Department of Information	PIF	<input type="checkbox"/>
180303	Tumnob Rolok	Drug and related law education	12	time	1200	Police Commissioner's Office		✓
180303	Tumnob Rolok	Identification card issued	2	time	3000	Police Commissioner's Office		✓
180303	Tumnob Rolok	Gambling conquest reinforcement	12	time	2400	Police Commissioner's Office		✓
180303	Tumnob Rolok	pr	1	time	800	Cambodian Human Rights Association		<input type="checkbox"/>
Gender								
180303	Tumnob Rolok	Law against trafficking dissemination	1	time	800	Department of Labor and Vocational Training		<input type="checkbox"/>
180303	Tumnob Rolok	Law against trafficking dissemination	1	time	240	Department of Social and Veteran Affairs and Youth Rehabilitation	PIF	<input type="checkbox"/>
180303	Tumnob Rolok	Anti-trafficking of women and children law dissemination	1	time	240	Department of Women	PIF	<input type="checkbox"/>
180303	Tumnob Rolok	Anti-trafficking of women and children law dissemination	2	time	400	BAICE		<input type="checkbox"/>
180303	Tumnob Rolok	Anti-trafficking of women and children law dissemination	2	time	400	Cambodian League for the Promotion and Defense of H.R		<input type="checkbox"/>

District Data Book 2009: Development Plans and Projects

Commune GIS	Commune	Temporary Agreements				Supporter	Funding Source	Listed in CIP before DIW
		Project Name	Quantity	Unit	Est.Cost (K.Riels)			
180303	Tumnob Rolok	fh	1	place	40000	BAICE		<input type="checkbox"/>
180303	Tumnob Rolok	Gender concept/equity mainstreaming	1	Course/year	240	Department of Women	PIF	✓
180303	Tumnob Rolok	Protection network for women and children dissemination	4	time	1000	BAICE		<input type="checkbox"/>
180303	Tumnob Rolok	Law against domestic violence dissemination	1	time	240	Department of Women	PIF	✓
180303	Tumnob Rolok	Law against domestic violence dissemination	2	time	400	BAICE		✓
180303	Tumnob Rolok	Children's labor exploitation elimination	1	time	1000	Department of Labor and Vocational Training		✓
180303	Tumnob Rolok	Children's labor exploitation elimination	2	time	2000	BAICE		✓
180303	Tumnob Rolok	Woman and children's rights dissemination	1	time	240	Department of Women	PIF	✓
180303	Tumnob Rolok	Woman and children's rights dissemination	2	time	1000	BAICE		✓
180303	Tumnob Rolok	Women role in development strengthening/dissemination	1	time	240	Department of Women	PIF	✓
180303	Tumnob Rolok	Children's labor exploitation elimination	2	time	2000	BAICE		<input type="checkbox"/>

Source: CDPD, District Level Detail TA resulting from DIW

8.3 Outputs, estimated and actual costs of C/S Fund Projects between 2005 and 2008, by Commune

Commune	Project Type	Budget Year	Output		Quantity	Unit	Unit Cost MR	
			Description	Type			Estimate	Actual
Kampenh	Rural Transport	2005	Triple pipe culvert	New	1	Place	3.32	16.59
Kampenh	Rural Transport	2005	Single pipe culvert	New	4	Place	9.14	16.59
Kampenh	Rural Transport	2005	Laterite road	Repair	0.47	Km	8.28	16.59
Kampenh	Rural Transport	2006	Laterite road	Repair	1.75	Km	23.01	28.73
Kampenh	Rural Transport	2006	Single pipe culvert	New	4	Place	5.59	28.73
Kampenh	Rural Transport	2007	Bitumen road	New	0.1	Km	22.25	21.80
Kampenh	Rural Transport	2008	Single pipe culvert	New	1	Place	5.40	27.09
Kampenh	Rural Transport	2008	Bitumen road	Upgrade	5.10E-02	Km	21.69	27.09
Ou Treh	Rural Transport	2005	Single pipe culvert	New	4	Place	8.53	18.02
Ou Treh	Rural Transport	2005	Laterite road	Repair	0.95	Km	14.93	18.02
Ou Treh	Rural Transport	2006	Single pipe culvert	New	2	Place	2.89	33.35
Ou Treh	Rural Transport	2006	Laterite road	Repair	1.61	Km	28.62	33.35
Ou Treh	Rural Transport	2007	Double pipe culvert	New	1	Place	4.44	26.36
Ou Treh	Rural Transport	2007	Laterite road	Repair	0.501	Km	16.87	26.36
Ou Treh	Urban Drainage and Flood Protection	2007	Drainage	New	0.138	Line	16.11	20.04
Ou Treh	Urban Drainage and Flood Protection	2007	Single pipe culvert	New	2	Place	0.80	20.04
Ou Treh	Rural Transport	2007	Single pipe culvert	New	3	Place	5.07	26.36
Ou Treh	Rural Transport	2008	Concrete road	New	5.80E-02	Km	32.92	33.01
Ou Treh	Urban Drainage and Flood Protection	2008	Drain pipe for flood water	Upgrade	1	Line	21.93	21.93
Tumnob Rolok	Rural Transport	2005	Laterite road	Repair	1.15	Km	20.54	20.57
Tumnob Rolok	Rural Transport	2005	Single pipe culvert	New	4	Place	6.46	20.57
Tumnob Rolok	Rural Transport	2006	Laterite road	Repair	2.6	Km	37.21	42.22
Tumnob Rolok	Rural Transport	2006	Single pipe culvert	New	2	Place	4.94	42.22
Tumnob Rolok	Rural Drainage and Flood Protection	2007	Canal	Repair	1.582	Km	32.17	32.15
Tumnob Rolok	Rural Transport	2007	Single pipe culvert	New	2	Place	5.06	33.20
Tumnob Rolok	Rural Transport	2007	Laterite road	Repair	1.109	Km	28.16	33.20
Tumnob Rolok	Rural Transport	2008	Concrete road	New	5.83E-02	Km	37.19	37.29
Tumnob Rolok	Urban Drainage and Flood Protection	2008	Drain pipe for flood water	New	1	Line	18.63	18.66

Source: PID

8.4 Total Expenditure on C/S Fund Projects by sector and commune between 2005 and 2008

Sector	Total Cost in Million Riels		
	Kampenh	Ou Treh	Tumnob Rolok
Rural Drainage and Flood Protection			32.15
Rural Transport	94.21	110.75	133.28
Urban Drainage and Flood Protection		41.97	18.66

*Source: PID***8.5 Actual 2009 C/S Fund projects by Commune**

Commune	Project Type	Project Output		Quantity	Unit	Fund Source (Riels)		
		Description	Type			Total	C/S	Local Contribution
Kampenh	Rural Transport	Steel-reinforced concrete road	Upgrade	0.054	km	33,346,488	32,946,488	400,000
Ou Treh	Rural Transport	Steel-reinforced concrete road	Upgrade	0.066	km	252,107,060	251,557,060	550,000
Tumnob Rolok	Rural Transport	Steel-reinforced concrete road	Upgrade	0.0705	km	45,689,600	44,689,600	1,000,000

Source: PID

9 District level Projects from 2006 to 2009

District Initiative Projects (DIPs) are funded by Danida, DFID and PSDD (UNDP, DFID and SIDA).

Funding for 2006-2008

Between 2006 and 2008 there were 14 provinces funded by PSDD and 10 by Danida and DFID. The list of provinces and who funded these is below

Danida and DFID funded DIPs:

Kampong Cham	Kampong Speu	Koh Kong	Kratie	Monduliri
Pursat	Ratanakiri	Siem Reap	Sihanoukville	Kep

PSDD funded DIPs:

Banteay Meanchey	Battambang	Kampong Chhnang	Kandal	Phnom Penh
Prey Veng	Svay Rieng	Takeo	Kampong Thom	Preah Vihear
Stung Treng	Kampot	Oddar Meanchey	Pailin	

Funding for 2009

In 2009 there was a change to the number of provinces funded by the two streams. Danida and DFID were still funding the same 10 provinces they had been funding the previous three years, but two more provinces were added *Kampong Thom and Kampot*. Now PSDD funds 12 provinces and Danida and DFID fund 12.

9.1 District Initiative Infrastructure Projects from 2006 to 2009

9.1.1 District Initiative Infrastructure Projects for 2006 to 2008

Date	Project Name	Implementing Agencies	Budget (US\$)	Project Output & Capacity	Number of Beneficiaries
2007	Build tarred road	Inter-commune	20,692.32		

9.1.2 District Initiative Infrastructure Projects in 2009

No District Initiative Infrastructure Projects have been implemented in this district for 2009

9.2 District Initiative Service Projects from 2006 to 2009

9.2.1 District Initiative Service Projects for 2006 to 2008

Date	Project Names	Implementing agencies	Budget (US\$)	Project Output & Capacity	Number of Beneficiaries
2007	Pig raising awareness and provide piglets	District Agri	6,398.00		
2007	Dissemination on Sanitation and Environment	District Environment	864.00		
2008	Provide hen, ducks and support farmer groups	AGR office	3,953.14	3 groups, 4800 packages (mashroom)	3 Sangkats
2008	Form farmer groups and support Mushroom growing activity	AGR office	401.28	2 courses	3 Sangkats
2008	Animal raising training	AGR office	351.28	2 courses	3 Sangkats
2008	Mushroom growing training	AGR office	9,823.84	900 hens and 1500 dacks	3 Sangkats
2008	Support community fishery activity	Fishery	12,470.46	3 communities	3 Sangkats

9.2.2 District Initiative Service Projects in 2009

Project Name	Sector	Implementing Agency	Budget	Project outputs/ capacities	No. of Beneficiaries		Progress	Remarks on Issues of Progress
					Total	Female		
Release fish in community ponds	AGR	Fishery Admin	\$9,500.00	30,000 fish	13,000	5,750	0%	

9.3 Inter Commune Council Projects in 2008 and 2009

9.3.1 ICC Projects in 2008

Districts	Project Location	Beneficiary Commune/ Sangkat	Outputs	Project Size	Unit	Contract Cost	Fund Sources	
							ICC Fund	Community
Mitapheap	1 & 3	1 & 3	Concrete road	161	meter	\$21,500.00	\$20,500.00	\$1,000.00
	3&4	3&4	Concrete Culvert	1	place	\$12,500.00	\$11,780.77	\$719.00
Total for Mitapheap						\$34,000.00	\$32,280.77	\$1,719.00
Prey Nup	Sam Rong	SamRong & AndoungThma	Laterite road upgrade	700	meter	\$10,037.00	\$10,037.00	\$0.00
			Single pipe	2	place			
	SamRong & AndoungThma	SamRong & AndoungThma	Triple Culvert with gate	1	place	\$19,500.00	\$18,550.00	\$950.00
			Environment and sanitation	2	Session	\$1,400.00	\$1,400.00	\$0.00

Districts	Project Location	Beneficiary Commune/ Sangkat	Outputs	Project Size	Unit	Contract Cost	Fund Sources	
							ICC Fund	Community
	Oknha Heng	Oknha Heng, Boeng Taprom, Bit trang, Cheong Ko, O' Chriv	education					
	Choeng Ko, Samaki, Tuk La Ak	Choeng Ko, Samaki, Tuk La Ak	Bill-board on wildlife preservation	2	Unit	\$600.00	\$600.00	\$0.00
			Anti-wildlife hunting campaign	1	Session			
Total for Prey Nup						\$31,537.00	\$30,587.00	\$950.00
Stueng Hav	Kampenh & Otres	Kampenh , Otres ,Tomnoporlorc	Gravel road	278	meter	\$30,000.00	\$30,000.00	\$0.00
Total for Stoeng Hav						\$30,000.00	\$30,000.00	\$0.00
Kampong Seila	O' Baroteh	Kampong Sela, O' Bakroteh	Laterite road and culvert construction	400	Metre	\$11,700.00	\$11,640.00	\$60.00
	O' Baroteh	Kampong Sela, O' Bakroteh	Office construction for tourism community	1	Unit	\$10,780.00	\$10,740.00	\$40.00
Total for Kampong Seila						\$22,480.00	\$22,380.00	\$100.00
Total for Prah Sihanouk						\$118,017.00	\$115,247.77	\$2,769.00

9.3.2 ICC Projects in 2009

Districts	Project Location	Beneficiary Commune/ Sangkat	Outputs	Project Size	Unit	Contract Cost	Fund Sources	
							ICC Fund	Community
Krong Phreah Sihanouk	Sangkat 3	Sangkat 1 and Sangkat 3	Concrete Road Construction	180	Meter		\$20,000.00	\$251.00
	Sangkat 1, 2, 3 & Koh Rong	Sangkat 1, 2, 3 & Koh Rong	Training on Animal Raising	1	Course		\$2,228.44	
			Female Cow	5	Cow			
Total for Mitapheap						\$0.00	\$22,228.44	\$251.00
Prey Nup	Andoung Thmar	Angdoung Thmar, Samrong, Tual Tortueng	Laterite Road Construction	950	Meter		\$20,000.00	
			Culvert	3	Places			
	Chueng Kor	Chueng Kor, Sammaki, Veal Rinh	Laterite Road Construction	1,050	Meter		\$15,000.00	
Total for Prey Nup						\$0.00	\$35,000.00	\$0.00

Districts	Project Location	Beneficiary Commune/ Sangkat	Outputs	Project Size	Unit	Contract Cost	Fund Sources	
							ICC Fund	Community
Stoeng Hav	Tumnub Rolork	Kam Penh, Ou Thres, Tumnub Rolork	Gravel Road Construction	385	Meter		\$33,600.00	\$125.00
Total for Stoeng Hav						\$0.00	\$33,600.00	\$125.00
Total for Sihanoukville						\$0.00	\$90,828.44	\$376.00

Source: ICC project, Ministry of Interior (DoLA), -UNDP project for Local Governance – DDLG

9.4 Other Projects in 2008 and 2009

9.4.1 RPRP

There are no RPRP projects being implemented in this district or province at this time. The RPRP is only being implemented in Svay Rieng and Prey Veng

9.4.1.1 RPRP Projects from 2006 to 2008

No RPRP projects in this district at this time

9.4.1.2 RPRP Projects in 2009

No RPRP projects in this district at this time

9.4.2 Seth Korma

9.4.2.1 Seth Korma 2007

There are no Seth Korma projects being implemented in this district or province at this time.

Source: UNICEF

9.4.2.2 Seth Korma 2008

There are no Seth Korma projects being implemented in this district or province at this time.

Source: UNICEF

9.4.2.3 Seth Korma 2009

There are no Seth Korma projects being implemented in this district or province at this time.

Source: UNICEF

SECTION D: SERVICES AND ORGANIZATIONS

10 Infrastructure

10.1 Length of and Expenditure on Roads in 2008, by District

Roads	SHV	Preah Sihanouk	Prey Nub	Stoeung Hao	Kampong Seila
Length of paved road in the district in Km	30	28	0	2	0
Length of unpaved roads in the district in Km	28	9	17	2	0
Amount spent on construction of roads in 2008 (\$)	203,308	37,245	141,241	24,822	0
Amount spent on repair and rehabilitation of roads in 2008 (\$)	5,000	5,000	0	0	0

Note 1: Please note that these data are not necessarily complete or correct. The data are derived from government agencies at provincial and district level which used different recording systems, did not always have complete data or were, sometimes, less than willing to share their data.

Note 2: Please be aware that these data are incomplete due to the fact that the amounts for the construction, repair and rehabilitation recorded reflect only funds provided by the government, not the contributions by any other parties.

10.2 Scale of and Expenditure on Irrigation in 2008, by District

Irrigation	SHV	Preah Sihanouk	Prey Nub	Stoeung Hao	Kampong Seila
Number of irrigation schemes operating in 2008	50	3	47	n/a	n/a
Total nr of hectares under irrigation in dry season 2008	-	n/a	n/a	n/a	n/a
Total funds spent in 2008 on construction of irrigation systems (\$)	-	n/a	n/a	n/a	n/a
Total funds spent in 2008 on rehabilitation/repair of irrigation systems (\$)	19,867	n/a	19,867	n/a	n/a
Total funds spent in 2008 on operation and mainten/ance (\$)	33,261	n/a	33,261	n/a	n/a

Note 1: Please note that these data are not necessarily complete or correct. The data are derived from government agencies at provincial and district level which used different recording systems, did not always have complete data or were, sometimes, less than willing to share their data.

Note 2: Please be aware that the data above are incomplete as these only reflect funds provided by the government, not the contributions by farmers or other parties.

10.3 Power Supply in 2008, by District

Electricity	SHV	Preah Sihanouk	Prey Nub	Stoeung Hao	Kampong Seila
Total number of electricity connections to households	13,345	7,598	3,500	2,247	n/a
Total number of electricity connections to agencies, companies, organizations	1,022	1,014	7	1	n/a
Total volume in KWh of electricity consumed last in 2008	1,950,216	n/a	87,500	75,018	n/a
Total amount collected from users for consumed electricity (\$)	1,655,170	1,537,920	43,750	73,500	n/a
Per capita electricity consumption in 2008 in Kwh	221	178	25	18	n/a

Note 1: Please note that these data are not necessarily complete or correct. The data are derived from government agencies at provincial and district level which used different recording systems, did not always have complete data or were, sometimes, less than willing to share their data.

Note 2: These data only record electricity provided by electricity companies and does not include homes powered by generators or batteries (for this information see Section B: General Profile, Part 1: General Information; table 1.3.1 and chart 1.3.4).

Note 3: In most provinces electricity is only provided through town-based networks

Note 4: Per capita consumption is calculated by dividing the total volume of electricity produced in 2008 by the number of people living in each district as per the 2008 census (for the provincial data it is calculated against the number of people living in the province)

11 Health Facilities

Please note that the Operational District (health) boundaries are different to the administrative district boundaries. Therefore the data provided here shows the facilities, staff, NGOs etc in each Operational District within the province NOT the administrative district.

Acronyms

Com Cov	Commune Covered	MW2	Secondary Midwives
CPA	Complementary Package of Activities	NU1	Primary Nurse
Dr	Doctor	NU2	Secondary Nurse
FDH	Former District Hospital	OD	Operational District
HC	Health Center	Others	Other Staff
HC (NB)	Health Center no building	PHD	Provincial Health Department
HP	Health Post	Pop 04-05	Population Covered 2004 or 2005
MA	Medical Assistant	RH	Referral Hospital
MPA	Minimum Package of Activities	Vil Cov	Village Covered
MW1	Primary Midwives	VIL-HC	Distance from Village to Health Center

11.1 Health Facilities in the Province, by Operational District

Sihanouk Ville	OD	RH	HC	HP
Sihanouk Ville	1		10	2
Total	1	0	10	2

11.2 Health Facilities and Staff in the province, by Operational District

This table shows health facilities, staff and coverage of health facilities in each operational district.

No	Facility Name	Type	Class	Dr	Ma	Nu2	Nu1	Mw2	Mw1	Others	Com Cov	Vil Cov	Pop. 04-05
Sihanouk Ville													
1	Andaung Thma	HC	MPA	1	0	1	3	0	2	1	3	14	14,441
2	Cheung Kou	HC	None MPA	0	0	0	0	0	0	0	1	9	9,828
3	Kaoh Rung	HP	Nil	0	0	0	0	0	0	0	1	4	2,178
4	O Chrov	HC	MPA	0	0	3	2	2	0	0	2	11	16,251
5	O Oknha Heng	HC	MPA	0	1	2	5	0	1	1	2	10	13,078
6	Preak Kranh	HP	Nil	0	0	0	2	0	0	0	1	1	1,047
7	Ream	HC	MPA	0	0	7	2	0	1	0	2	7	12,022
8	Sangkat Muoy	HC	MPA	0	2	2	2	4	0	0	2	6	32,439
9	Sihanoukville	HC	MPA	2	1	4	3	3	2	1	2	9	35,336
10	Steung Hav	HC	MPA	1	2	8	1	1	1	0	3	10	12,861
11	Tuek L'ak	HC	MPA	0	0	2	3	1	1	0	3	10	10,252
Total:				4	6	29	23	11	8	3	22	91	159,733

Source: MEDiCAM – Infrastructure - (http://www.medicam-cambodia.org/hsi/health_system/srch/index.asp?cboLcn=6&cmdSearch=Search&cboCHName=&cboType=)

11.3 Deliveries in 2007 in the Province, by Operational District

OD	Deliveries	Deliveries at home		Deliveries	Total deliveries	Total deliveries
	at HC	By Health Staff	ByTBAs	at RH	by Health Staff	by health staff and TBAs
Sihanouk	578	619	453	600	1797	2250
<i>Sub-total</i>	<i>578</i>	<i>619</i>	<i>453</i>	<i>600</i>	<i>1797</i>	<i>2250</i>

Source: MoH, Annual Statistics 2007

12 Education³

12.1 Schools, Classes, Students, Staff, for all levels, for 2007/2008 by District

District	Number of Schools	Disadv. Schools	Number of Classes	Classes in Pagoda	Enrollment		Repeaters		Teaching Staff		Non-Teaching Staff		Total Staff	
					Total	Girl	Total	Girl	Total	Female	Total	Female	Total	Female
Mittapheap	28	1	491	4	18,060	8,481	949	359	665	294	93	42	758	336
Prey Nup	59	0	506	0	22,133	10,224	2,096	855	505	164	106	15	611	179
Stung Hav	9	0	69	2	2,844	1,346	112	36	92	29	11	2	103	31
Whole Province	96	1	1,066	6	43,037	20,051	3,157	1,250	1,262	487	210	59	1,472	546
- Urban Area	96	1	1,066	6	43,037	20,051	3,157	1,250	1,262	487	210	59	1,472	546

12.2 Characteristics of Schools and School Principals for 2007/2008 by Commune

Commune	Number of Schools				2 - Shift	Floating	Schools	Attached	Schools Without			Characteristics of School Principals (Incharge)			
	Pre-Sch	Primary	College	Lycee	Schools	Schools	in Pagoda	Pre-Sch	Water Sup.	Latrine		Avg. Age	Avg. Service	U.Sec+ Ed.	Female
Kamphenh	1	1	1	0	2	0	0	1	1	0		32.2	8.0	3	0
Ou Treh	1	1	0	1	1	0	0	1	2	1		46.8	18.0	1	0
Tumnob Rolok	1	1	1	0	2	0	0	1	2	0		49.3	21.0	1	0

12.3 Enrolment by Level of Education, 2006/2007 by Commune

Commune	School	Pre school		Primary School		Lower Secondary School		Upper Secondary School		Enrolment	
		Total	Female	Total	Female	Total	Female	Total	Female	Total	Female
Kamphenh	2	43	25	280	141	0	0	0	0	323	166
Ou Treh	3	45	23	433	208	500	229	217	79	1195	539
Tumnob Rolok	3	85	39	1334	652	167	96	0	0	1586	787

³ All the data for section 12 comes from the Ministry of Education, Youth and Sport (MoEYS)

12.4 Enrolment by Level of Education, 2007/2008 by Commune

Commune	School	Pre school		Primary School		Lower Secondary School		Upper Secondary School		Enrolment	
		Total	Female	Total	Female	Total	Female	Total	Female	Total	Female
Kamphenh	3	21	11	233	114	32	15	0	0	286	140
Ou Treh	3	25	15	332	165	363	162	312	115	1032	457
Tumnob Rolok	3	55	28	1166	565	305	156	0	0	1526	749

12.5 Aspects of Enrolment for 2007/2008 by Commune

Commune	% Repeaters (Total)			% Over-age Enrollment (Total)			% Repeaters (Girl)			% Over-age Enrollment (Girl)		
	Primary	L.Sec.	U.Sec.	Primary	L.Sec.	U.Sec.	Primary	L.Sec.	U.Sec.	Primary	L.Sec.	U.Sec.
Kamphenh	1.7	0.0	0.0	25.8	25.0	0.0	0.0	0.0	0.0	30.7	26.7	0.0
Ou Treh	6.3	2.8	1.0	27.7	52.6	42.9	4.2	0.6	0.0	24.8	43.8	32.2
Tumnob Rolok	6.3	0.0	0.0	30.0	36.4	0.0	5.0	0.0	0.0	27.4	27.6	0.0

12.6 School Buildings for all schools in the District for 2007/2008, by Commune

Commune	Total Number of		Concrete/Brick Structure		Wooden Structure		Bamboo Structure		New Buildings		Buildings Without Good		
	Buildings	Rooms	Buildings	Rooms	Buildings	Rooms	Buildings	Rooms	Repaired	Constructed	Floor	Roof	Wall
Kamphenh	4	18	3	16	1	2	0	0	0	2	0	0	0
Ou Treh	7	34	5	26	2	8	0	0	0	1	0	0	1
Tumnob Rolok	8	38	5	28	3	10	0	0	0	1	3	3	3

12.7 Conditions of Classrooms and Existence of Separate School Office and Library, by Commune

Commune	Number of Class rooms	Number of Classrooms			Classrooms Without Good			Number of Furniture needed				Schools with Separate	
		in Pagoda	New Repaired	New Constr.	Floor	Roof	Wall	Desks	Chairs	Black-board	Teacher Table	Office	Library
Kamphenh	6	2	0	10	0	0	0	0	0	0	0	2	2
Ou Treh	23	0	0	6	0	0	4	5	5	10	10	1	0
Tumnob Rolok	36	0	0	5	10	10	10	0	0	0	0	2	1

12.8 Community Participation and Financing across all schools in the District for 2007/2008 by Commune

Commune	Parent Association				Commu. Teachers	Teaching Monks	PAP Fund (Riel)		Number of Schools Obtaining Funds from				
	Exists	Held Meet	Total	Female			per Student	per School	Sch. Income	Community	Gvt. For building	Abroad	IOs/NGOs
Kamphenh	3	3	5	0	0	0	11,493	3,218,000	0	0	0	0	0
Ou Treh	1	1	12	2	0	0	11,601	6,670,400	0	0	0	0	0
Tumnob Rolok	2	2	12	2	0	0	8,577	5,721,000	0	1	0	0	0

12.9 Percentage Student Flow Rates and Graduation by level 2006/2007, by Commune

Commune	Primary Level (Grades 1-6)			Lower Secondary Level (Grades 7-9)			Upper Secondary Level (Grades 10-12)			Successful Candidates		
	Promotion	Repetition	Dropout	Promotion	Repetition	Dropout	Promotion	Repetition	Dropout	Grade 6	Grade 9	Grade 12
Kamphenh	82.1	1.4	16.4	0.0	0.0	0.0	0.0	0.0	0.0	43	0	0
Ou Treh	73.7	4.8	21.5	88.8	2.0	9.2	92.6	1.4	6.0	63	168	42
Tumnob Rolok	80.4	5.5	14.0	91.6	0.0	8.4	0.0	0.0	0.0	162	0	0

13 Staff and Resources at the District

This chapter presents data from the District Information System, collected around the middle of 2009 unless otherwise specified.

13.1 District Councilors elected in 2009

Name	Sex	Year of Birth	Function	Phone
ជ័យ វិសុន	M	0000	Chairperson of The Council	
ប៊ុន ឈុយ	M	0000	Councillor	011-785 440
ស៊ី សេងហ៊ុន	M	0000	Councillor	011-561 277
ឃុំ ប៊ុនឡើង	M	0000	Councillor	011-647 011
ជុន សារ៉េត	M	0000	Councillor	016-381 298
សោម គឹមយាន	F	0000	Councillor	
សរ សុខា	M	0000	Councillor	

13.2 Committees of the Council

Please note at the time of producing the district data books the composition of the committees was not known for all district councils and therefore data were not available for 13.2.1, 13.2.2, 13.2.3.

13.2.1 Technical Facilitation Committee

13.2.2 Women's and Children's Affairs Committee

13.2.3 Procurement Committee

13.3 Board of Governors

Name	Sex	DoB	Function	Salary Level	Body	Phone
បាន សារ៉ុន	M	0000	District Governor			
ឆាយ សុគន្ធដា	M	0000	District Deputy Governor			
ប៊ុន វណ្ណយត្តា	M	0000	District Deputy Governor			

13.4 Offices under Sala Krong, Sala Srok and Sala Khan

Office Name	Chief		Deputy Chief		No. of Staff				Office Area (m2)	No of vehicle (public or program)	
					State		Contract				
	M	F	M	F	M	F	M	F		vehicle	moto
Adminnistration Office	1	0	1	0	8	0	0	0	Borrow	0	0
Economy Office	1	0	1	0	2	0	0	0	Borrow	0	0

13.5 Municipality/District/Khan line offices

Office Name	Chief		Deputy Chief		No. of Staff				Office Area (m2)	No of vehicle (public or program)	
					State		Contract				
	M	F	M	F	M	F	M	F		vehicle	moto
District/ Khan Police Headquarter	1	0	5	0	47	0	0	0	Borrow	0	4
District/ Khan Military Police Headquarter	1	0	4	0	17	0	0	0	Borrow	1	2
District/ Khan Military Subregion	1	0	5	0	12	0	0	0	Borrow	0	0
Planning Office	1	0	0	0	1	0	0	0	Borrow	0	0
Environment Office	1	0	1	0	0	0	0	0	Borrow	0	0
Education Office	1	0	3	0	0	3	0	0	Borrow	0	0
District/ Khan Operational Office	1	0	1	1	4	3	0	0	Borrow	0	3
Agriculture Office	0	0	1	0	1	0	0	0	Borrow	0	0
Cult and Religion Office	1	0	0	0	0	0	0	0	Borrow	0	0
Post Office	1	0	0	0	0	0	0	0	Borrow	0	0
Lan Management Office	1	0	4	0	4	0	0	0	1320	0	3
Forestry Administration Sangkat	1	0	1	0	3	0	0	0	Borrow	0	0
Fishery Sangkat	1	0	1	0	0	0	0	0	Borrow	0	0

13.6 Properties and Equipment of District Administration

13.6.1 Buildings

Description	Unit	Number	Remark
Office building type			
- Concrete	building	2	
- Wood	building	1	
- Mixed	building	0	
Total floor space	m2		
- Concrete	m2	227.7	
- Wood	m2	300.43	
- Mixed	m2	0	
Building condition			
- Concrete	%	80	
- Wood	%	50	
- Mixed	%	0	
Office reserved land area	m2	0	
Total office land area	m2	13,135	

13.6.2 Means of Transport available at the District Administration

Description	Unit	Number	Remark
Vehicle (type, size and condition)	Vehicle	0	
Motorcycle (type, size and condition)	Motor	0	

13.6.3 Equipment in District Offices

Description	Unit	Number	Remark
Generator	per set	0	
Photocopy machine at the office	per set	0	
Private photocopy machine at the district town	place	3	
Telephone network (mobile line service)	network	4	
Telephone network (land line service)	network	0	
Fax (include Fax number)	per set	0	
Computer	per set	3	
Printer	per set	2	
Scanner	Per set	1	
Number of computers those can access Internet and email services in the municipality/ district/khan office (including the technical line offices (please provide the email address)	set	0	
Typewriters (including the technical line offices)	per set	2	
Staff of Municipality/district/khan office can use computer	person	4	

13.6.4 Equipment and facilities at the District Town

Description	Unit	Number	Remark
Availability of electricity at noon	Nr Hours	0	
Private internet and email services in the municipality/ district/khan town.	place	0	

13.7 Registered Revenue of the District Administration in 2008⁴

13.8 Services in the District

13.8.1 Public Sector Services

Type of Infrastructure/services	Unit	Number	
		Public	Private
Schools			
Pre-school	room	4	0
Primary School	room	36	0
Secondary school	room	4	0
High School	room	25	0
University	room		
Health			
Health post	place		
Health center	place	1	0
Referral Hospital	bed		

13.9

⁴ Please note that the data in this table are at best estimates. If the table appears blank it does not mean there is no revenue, just that the data have not been recorded/entered.

13.10 Civil Society Organizations active in the District

13.10.1 NGOs, Associations, Programs and Projects

Name	Abbr.	Sector Activities	No. of Target Communes	No. of Target Villages	Office in District
NA	NA	មិនមាន	0	0	No
NA	NA	មិនមាន	0	0	No
NA	NA	មិនមាន	0	0	No
NA	NA	មិនមាន	0	0	No
NA	NA	មិនមាន	3	0	Yes

13.10.2 Political Parties active in the Municipality, District and Khan

Name	Abbr.	Office in District
Cambodian People Party	CPP	Yes
FUNCINPEC Party	FUNCINPEC	Yes
Human Rights Party	HRP	Yes
NRP	NRP	Yes
SAM RAINSY Party	Sam Rainsy Party	Yes

13.11 Private Sector Organizations

13.11.1 Registered Companies in 2008, by District

On private sector at commune and/or district level	SHV	Preah Sihanouk	Prey Nub	Stoeung Hao	Kampong Seila
Businesses and Companies					
Number of registered agricultural enterprises (except family farms)					
Number of registered shops, restaurants, transporters and other services	324	321	0	2	1
Number of manufacturing companies	15	15	0	n/a	0
Number of registered forestry enterprises	-	0	0	0	0
Number of registered mining companies	-	0	0	0	1
Number of fin/ancial institutions	8	8	n/a	n/a	0
Number of other commercial institutions	3	3	n/a	n/a	0
Estimated number of informal enterprises (not registered)	n/a	n/a	n/a	n/a	n/a
Employment					
Number of people employed in 2008 by companies or any other enterprises	12,913	9,959	2,006	948	n/a
Investment					
Amount invested in 2008 by private sector (\$)	45,970	45,970	n/a	n/a	n/a
Markets					
Number of markets, operating at least weekly	19	8	9	n/a	n/a

Note: These data are not comprehensive as different companies and business are registered with different departments and not all departments were able or willing to provide detailed information. The number of informal enterprises reflects a rough estimate, made at provincial level and could not be verified.

Source: Unofficially collected at Provincial Level

13.11.2 Farmers in 2008, by District

Credit	SHV	Preah Sihanouk	Prey Nub	Stoeung Hao	Kampong Seila
Volume of credit provided to farmers in 2008 (\$)	84,375	84,375	n/a	n/a	n/a
Number of farmers receiving credit in 2008	45	45	n/a	n/a	n/a
Volume of credit provided to companies in 2008 (\$)	N/A	N/A	n/a	n/a	n/a

Note: Please note that these data are not necessarily complete or correct. The data are derived from government agencies at provincial and district level which used different recording systems, did not always have complete data or were, sometimes, less than willing to share their data.

Source: Unofficially collected at Provincial Level

SECTION E: POVERTY DATA

14 Data on Poverty

14.1 Predicted Poverty Rates for 2009, by commune

The **Predicted Family Poverty Rate** is based on a statistical model (robust multilevel mixed effect regression) at village level developed by the NCDD M&E Unit and uses CDB data for making an estimate of the predicted poverty rate (this is: *the portion of total families in the district or commune who are expected to be poor*) for the following year using current year data.

The basis for this predicted poverty rate also uses IDPoor (a project of the Ministry of Planning with technical assistance provided by GTZ) data

Commune	2004	2009
Kampenh	20.50%	11.90%
Ou Treh	28%	14.80%
Tumnob Rolok	22.10%	10.30%

14.2 Poverty data from survey

14.2.1 Identification of Poor Households Program (IDPoor)

The Ministry of Planning IDPoor Program has developed standardized Procedures for Identification of Poor Households in rural areas. These Procedures are implemented using a participatory and consultative process by sub-national government structures and community representatives.

The IDPoor Program is managed by the Ministry of Planning (MOP), in cooperation with the Ministry of Interior's Department of Local Administration (DOLA). The program is supported by the Federal Republic of Germany, with technical assistance provided by German Technical Cooperation (GTZ). In 2009, AusAID also provided funding support to the Program.

Objective

The IDPoor Program aims to implement the Procedures for Identification of Poor Households in rural areas as widely as possible, in order to provide data on the level of poverty of areas and households that can be used by a large range of institutions and organizations for targeting services and development assistance to poor areas and poor households.

Coverage: During 2007, 2008 and 2009 the IDPoor Procedures have been implemented in 18 provinces (with partial or complete coverage), covering a total of around 7000 rural villages. The MOP and a number of NGO partners who are Health Equity Fund Operators have collaborated in collecting this data from different areas.

Categorization: Identified poor households are classified under two poverty categories: Poor Level 1 (very poor), and Poor Level 2 (poor). Households are classified based on data collected using a standard questionnaire, together with consideration by villagers of these households' special circumstances.

Further information: Please go to the IDPoor Program webpage at www.mop.gov.kh/Projects/IDPoor/tabid/154/Default.aspx

This District has not yet been covered by IDPoor